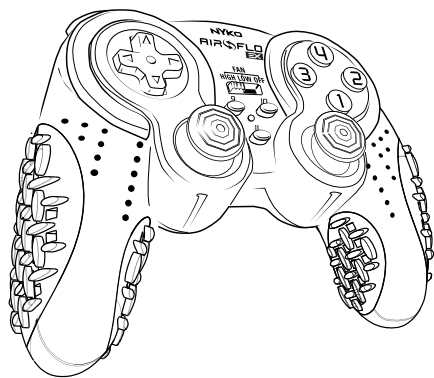


# INSTRUCTIONS



**AIR FLO EX**

for PC (Personal Computer)



Fig. 1

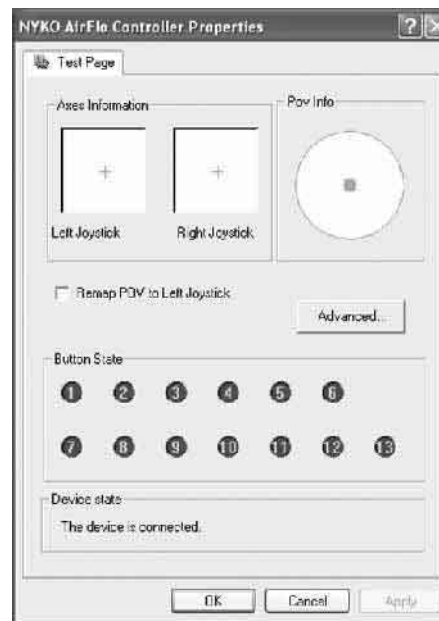


Fig. 2

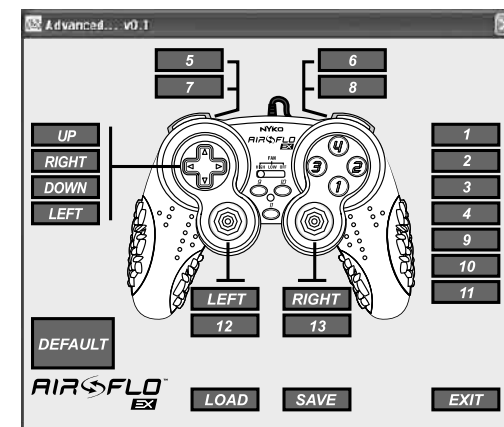


Fig. 3

## Instructions for the Air Flo EX for PC Controller

Thank you for purchasing the NYKO Air Flo EX for PC controller. This product delivers the finest quality, along with the most advanced features for your gaming enjoyment. Please take special note of the care instructions. Proper use and maintenance of this item will insure a long life and problem-free performance.

### FEATURES

- Adjustable Air Flo™ hand cooling technology eliminates perspiration and fatigue
- Dual analog control sticks
- Driver software for customizing 13 action buttons, D-Pad and control sticks, including keyboard and mouse emulation
- Use with ALL PC games, even keyboard and mouse-only titles
- 8-way directional / point-of-view pad
- Ventilated rubber grips for comfort and control
- 10-foot extra-long cable with velcro ties

### SOFTWARE INSTALLATION

1. Insert controller's USB plug into a USB port on the PC.
2. Insert Air Flo driver CD into your computer's CD drive
3. Follow the Windows prompts to install. Click "Continue Anyway" in the Windows Logo test box. You can also find the file "install.exe" on the CD and double-click it to install the driver.

**NOTE:** You can download the driver software from the NYKO web site: [www.nyko.com/nyko/products/?i=33](http://www.nyko.com/nyko/products/?i=33) Save the "install.exe" file to your hard drive, then double-click it. Follow the Windows prompts to install.

### CUSTOMIZING ACTION BUTTONS & CONTROL STICKS

The Air Flo EX driver software is a powerful tool that allows you to create multiple custom button configurations, which you can save & use for different

games or different players. In addition, you can map keyboard and mouse functions to the controller, allowing you to use it with all games, even titles that are not controller compatible. Once the driver software is installed:

1. Click START / Control Panel / Game Controllers
2. In the Game Controller window (Fig. 1), the "NYKO AirFlo Controller" should be listed, and the status should be "OK." Highlight the controller, then click Properties.
3. Use the Test Page window (Fig. 2) to verify your buttons and control sticks are working properly.
  - a. Place a check in the box "Remap POV to Left Joystick" if you want to set the D-Pad to control directional movement. This disables the D-Pad's default setting (POV controls), and both the D-Pad and left joystick will have the same directional movement functionality.
  - b. When you are done, click on the Advanced button.
4. In the Advanced window (Fig. 3) you can customize your button configuration, and assign keyboard and mouse functions.
  - a. Click on any on-screen button representing D-Pad, control sticks or controller buttons – this brings up a menu that allows you to choose from several options.
  - b. If you select "Assign a key...", a new window pops up which allows you to map that button to a key from the keyboard. **Note:** Buttons 12 & 13 are activated by pushing straight down on the left and right control sticks, respectively.
  - c. The control sticks can be mapped to the four directions of mouse movement. Click on the LEFT or RIGHT on-screen buttons and choose "Map to Mouse Movement."

- d. Once you have finished, click on SAVE, give the profile a name and place it in the folder of your choice. Click Save.
  - e. Pressing the DEFAULT button returns to the original state wherein no buttons on the controller are mapped to a keyboard stroke.
5. A shortcut will be installed to your desktop that brings you directly to the Advanced window whenever you need to load a new profile (LOAD button) or modify an existing one.
  6. The controller automatically returns to the last profile used each time you start.

### USE OF AIR FLO™ FUNCTION

NYKO's patented Air Flo™ technology uses an internal cooling device and specifically designed air channels to keep the player's hands cool and dry during long periods of gaming. Simply slide the FAN switch to one of 3 positions – HIGH, LOW, and OFF.

### CARE AND MAINTENANCE

- The moving parts in this controller are delicate. Please avoid throwing or dropping it.
- Please turn the Air Flo™ fan OFF when not needed.
- Always keep the Air Flo™ system's intake vent (on the back of the controller) away from dusty surfaces.
- NYKO recommends playing with clean hands. If cleaning the controller becomes necessary, always use a lint free dry cloth. Never use chemicals.
- NYKO's Air Flo EX for PC is susceptible to damage from liquids.
- Do not expose this controller to extreme conditions, such as direct sunlight or excessive heat or humidity.
- Discontinue use if the controller performs abnormally. Contact NYKO or the place of purchase.

### TROUBLESHOOTING

- If the LED light on the controller is not ON, check your

**NYKO**  
INNOVATION FIRST

Register this product online at:  
[www.nyko.com](http://www.nyko.com)

- connection. On rare occasions a driver conflict may need to be resolved. Check the USB port settings or try a different USB port if one is available.
- If the LED light is ON, but the fan is not functioning, check to see if anything is interfering with the rotation of the fan blades. If not, please contact the place of purchase, or NYKO, for further assistance.
- Please make sure that you are using the correct profile for the game you wish to play. It is always a good idea to check the profile before beginning to ensure that the button configuration is the one you need for that game.
- If you have lost or damaged your driver CD, please visit our website at [www.nyko.com](http://www.nyko.com) and download the latest version.
- Please make sure that your computer is running either Windows 2000 or Windows XP.
- This software is only compatible with the Air Flo EX for PC, item #80650.
- For some computers, it may be necessary to unplug the Air Flo EX for PC controller to properly shut down and/or restart your computer.

### TECHNICAL SUPPORT

We appreciate your support of NYKO products, and endeavor to guarantee your satisfaction with this purchase. In case of difficulties, please contact us.

**Email:** [customersupport@nyko.com](mailto:customersupport@nyko.com)

**Phone:** 1-888-444-NYKO (6956)

### NYKO Product Limited Warranty

This NYKO product is warranted to the original purchaser for the normal intended use for a period of ninety (90) days from the date of purchase. If a defect covered under this warranty occurs, NYKO will replace or repair the product or its defective parts, at its option, at no charge. Warranty does not apply to defects resulting from modification or misuse of this product. The product can be returned to the place of purchase accompanied with proof of purchase or shipped to: NYKO Technologies Inc., 1990 Westwood Blvd, 3rd Floor, Los Angeles, CA 90025, with freight charges prepaid. Please allow 3-4 weeks for processing.