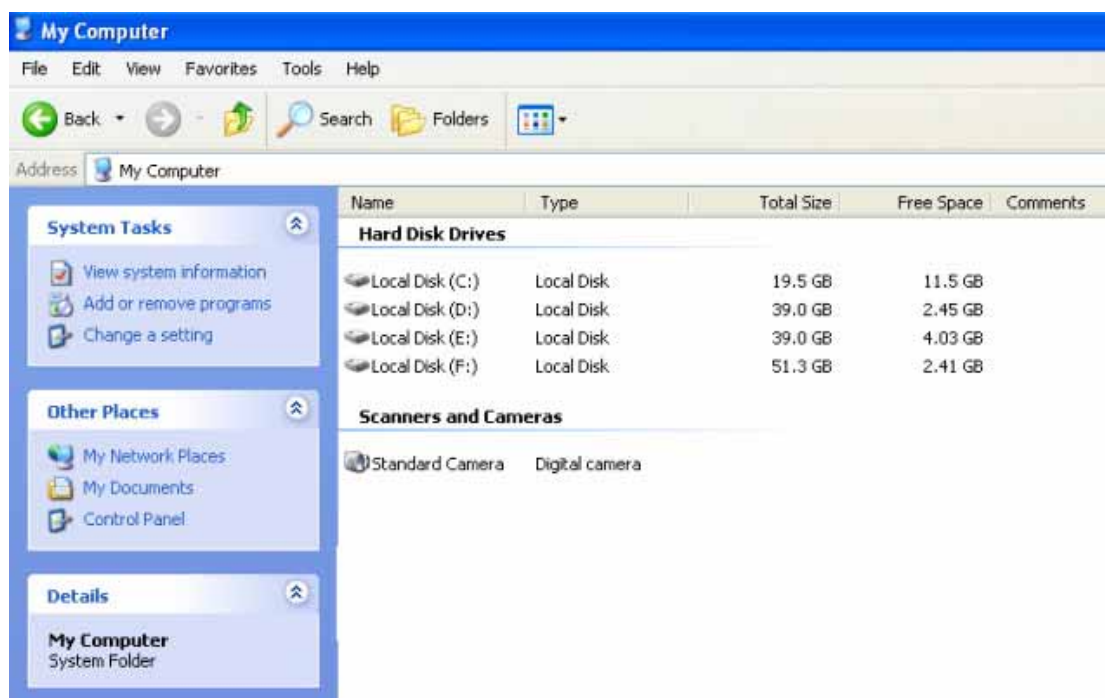


## Driver installation instruction

### Installation:

1. Please install the driver before using MD80. There are not any needs for setting during the whole installation process, and click “finish” to end the installation.
2. No installation icon on the desktop for reminding of to be finished and the procedure will start-up automatically when you use MD80.
3. When you connect MD80 with PC to be a PC camera, please keep both the power switch and sound trigger switch on, and a new item named “Standard Camera” could be found inside the file of “My Computer”.



### Uninstallation:

No automatical uninstallation function; system will default to uninstall the driver as you install it at the even time, so if the procedure of PC camera cannot be started-up well as the files would be deleted, please reinstall the driver for system recovery.