

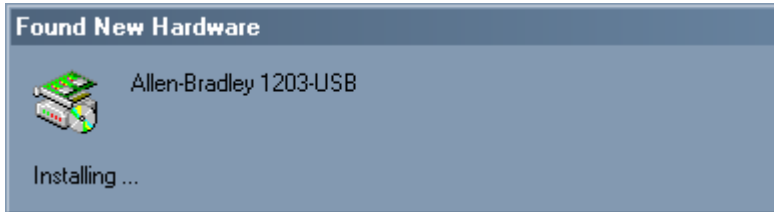


1203-USB

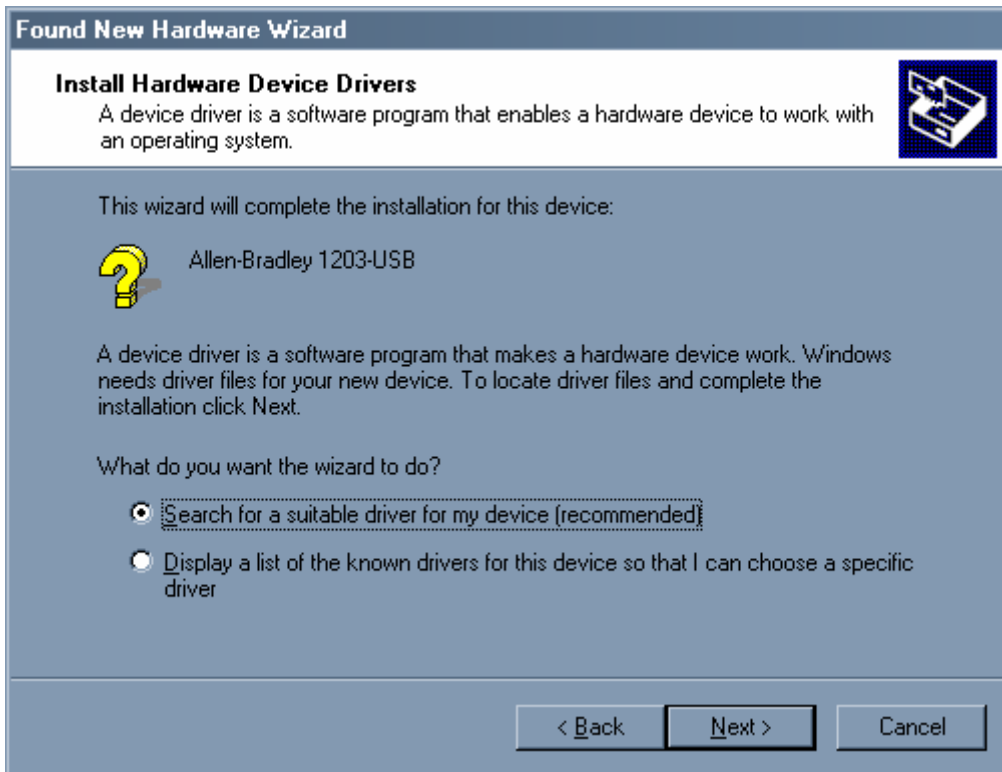
USB to **SCANport™/ DPI™**
Communications Module

Microsoft Windows Operating System Driver Installation Instructions

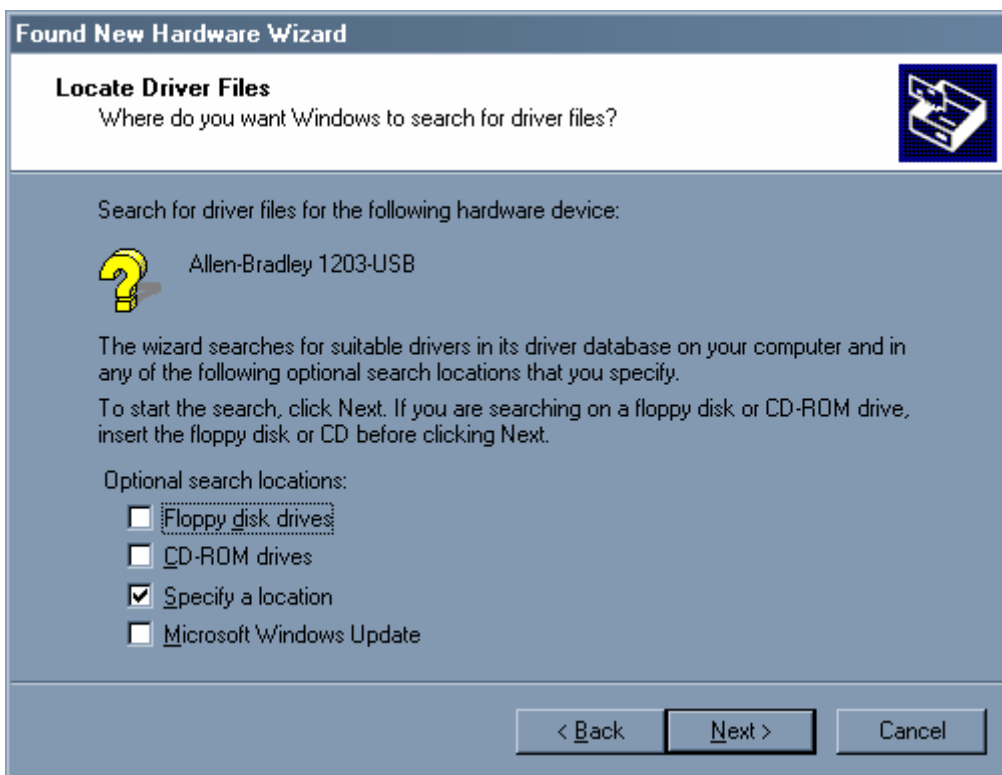
This file contains directions for loading the device drivers for the Allen-Bradley 1203-USB product. These instructions are for a Windows 2000 computer but other Windows computers will be configured similarly. Connect the USB cable to your computer you should get the following message:



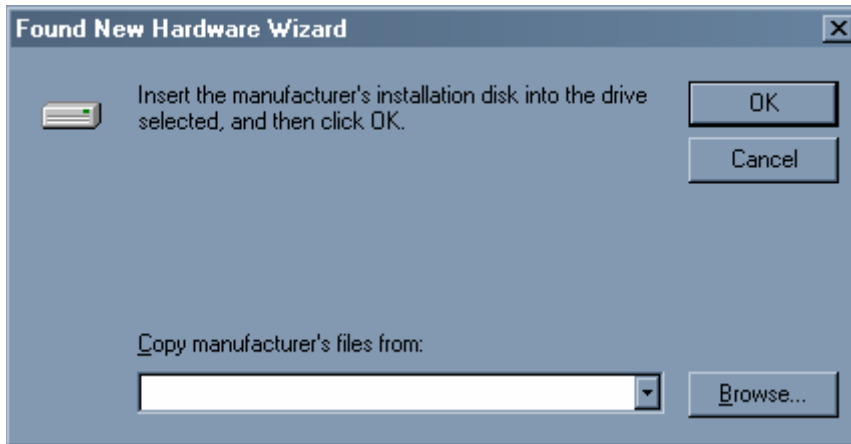
Click Next



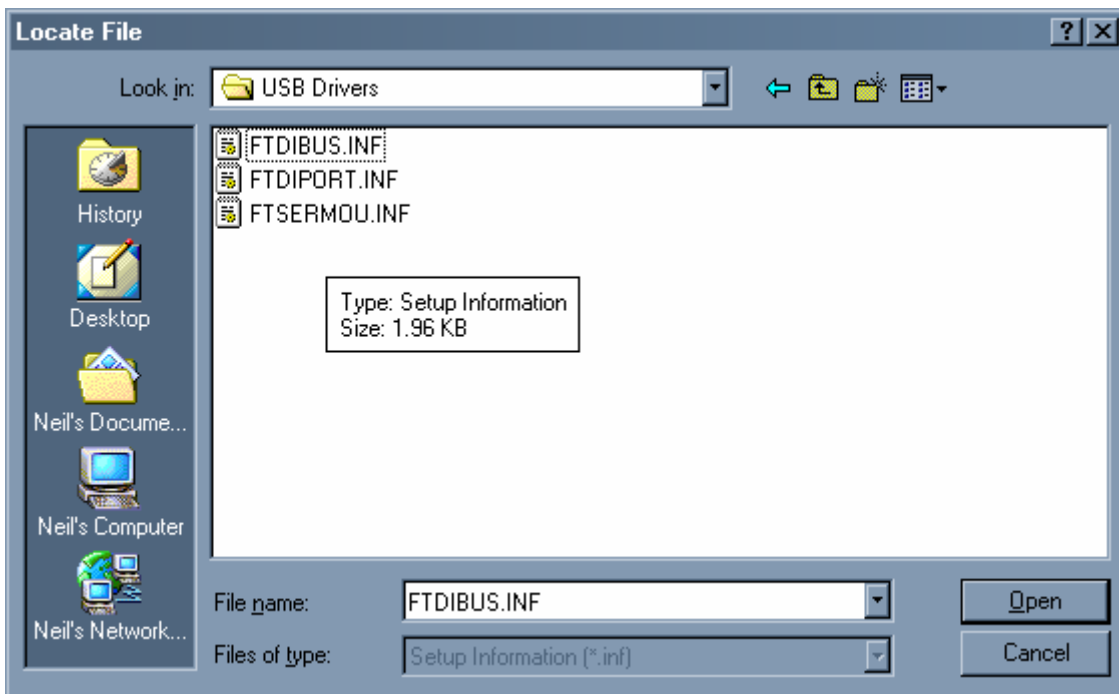
Click Next



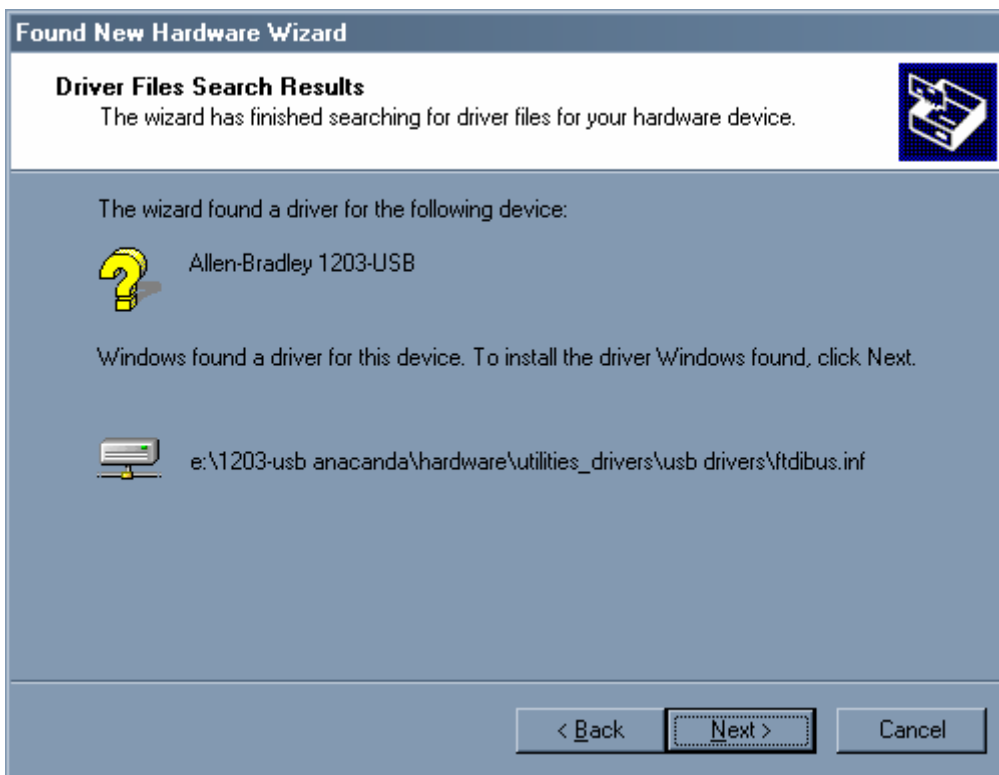
Click Next



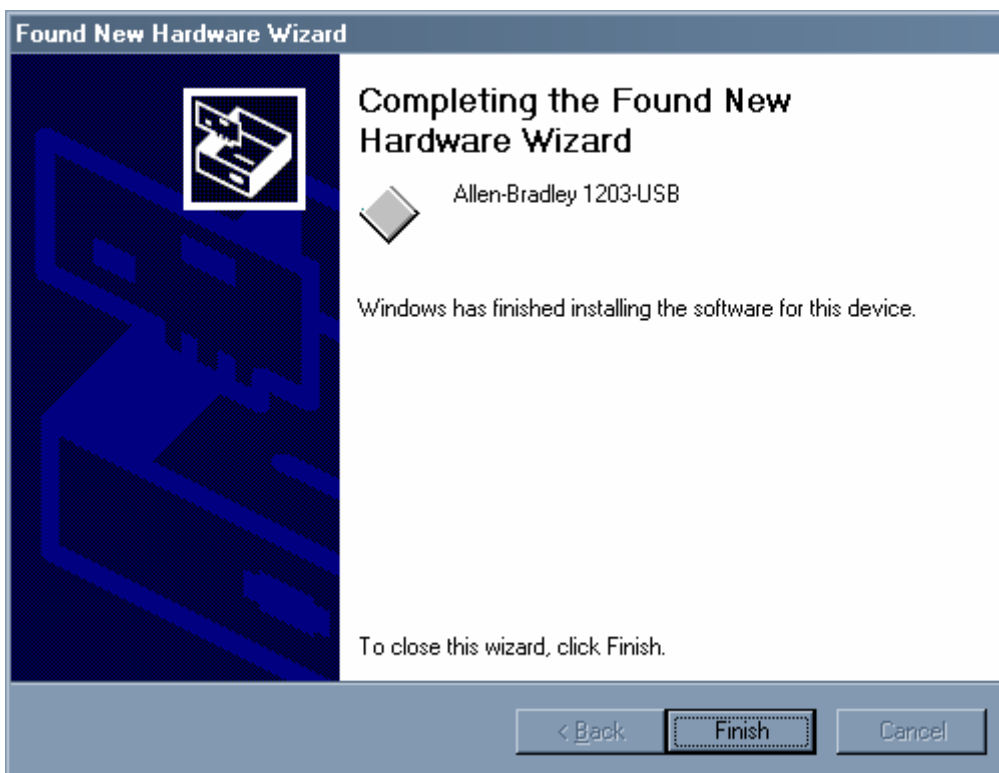
Specify the directory where you found this file. Click OK



Select the FTDIBUS.INF file and click Open.



Click Next.



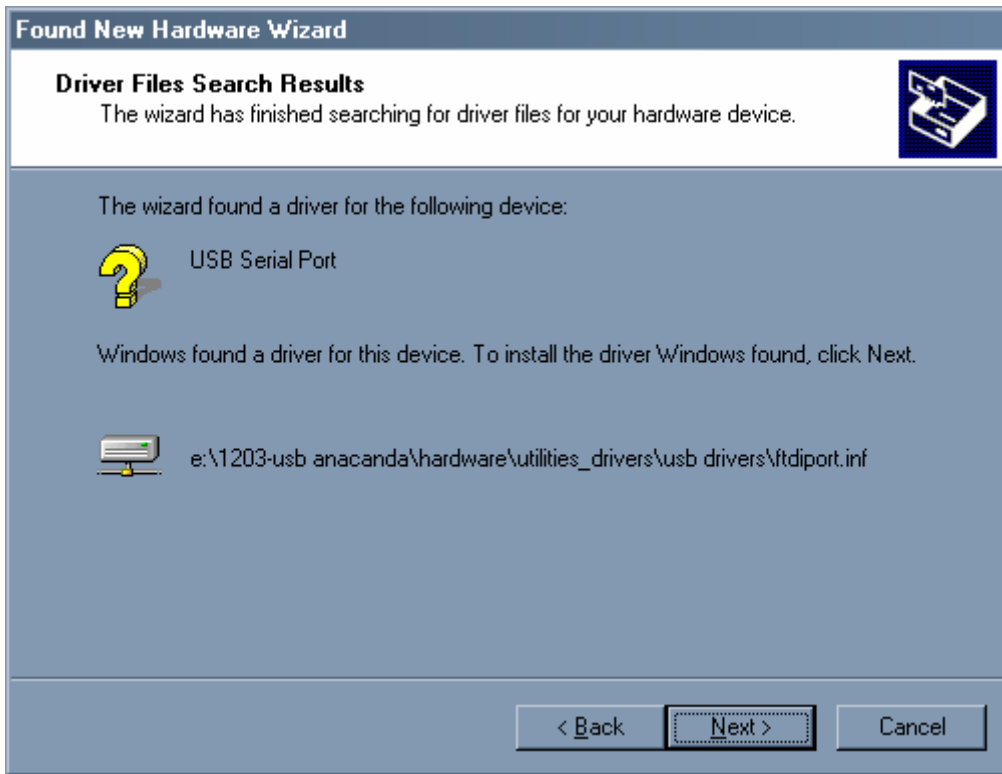
Click Finish



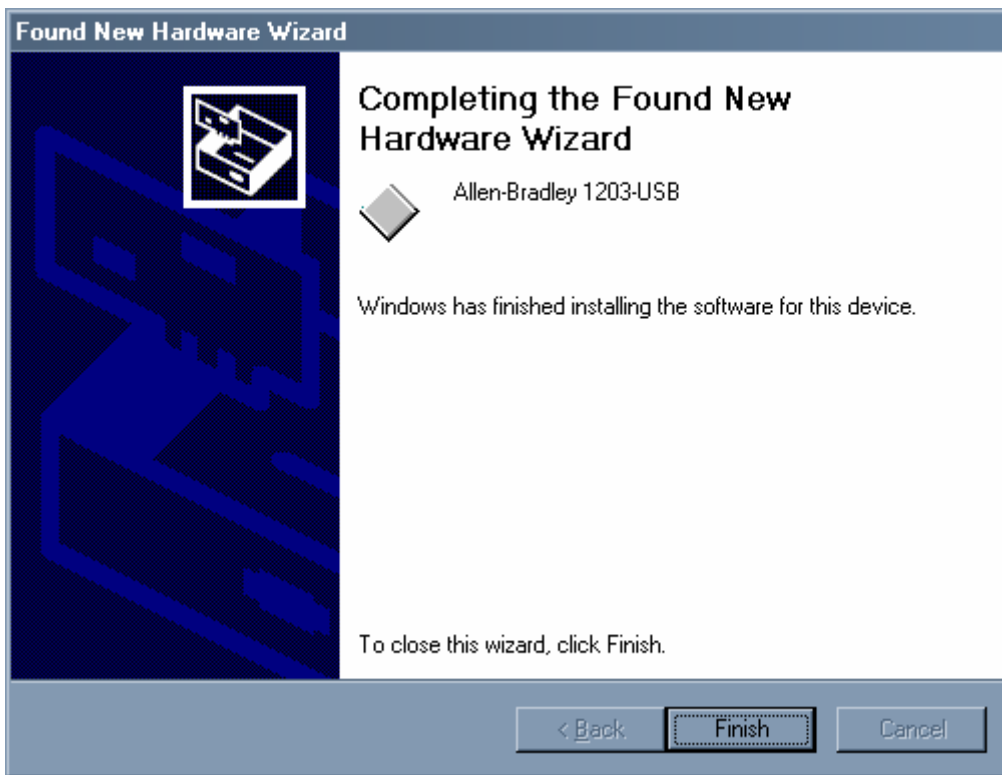
Click Next:



Click Next.

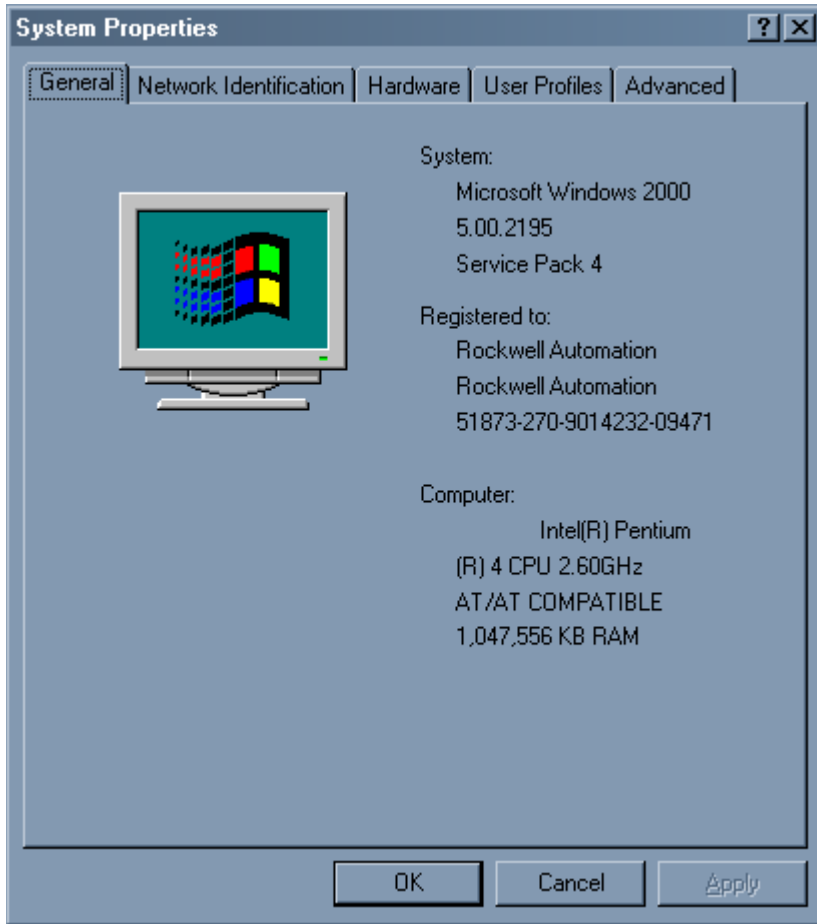


Click Next.

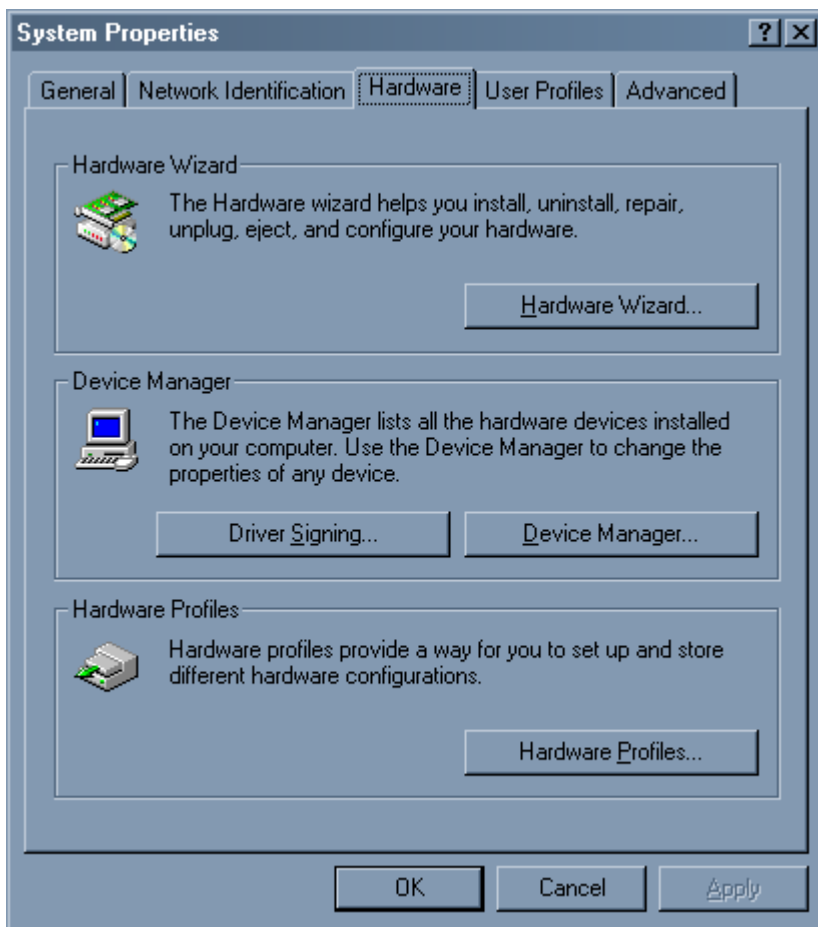


Click Finish. This will install a virtual COM port on your computer.

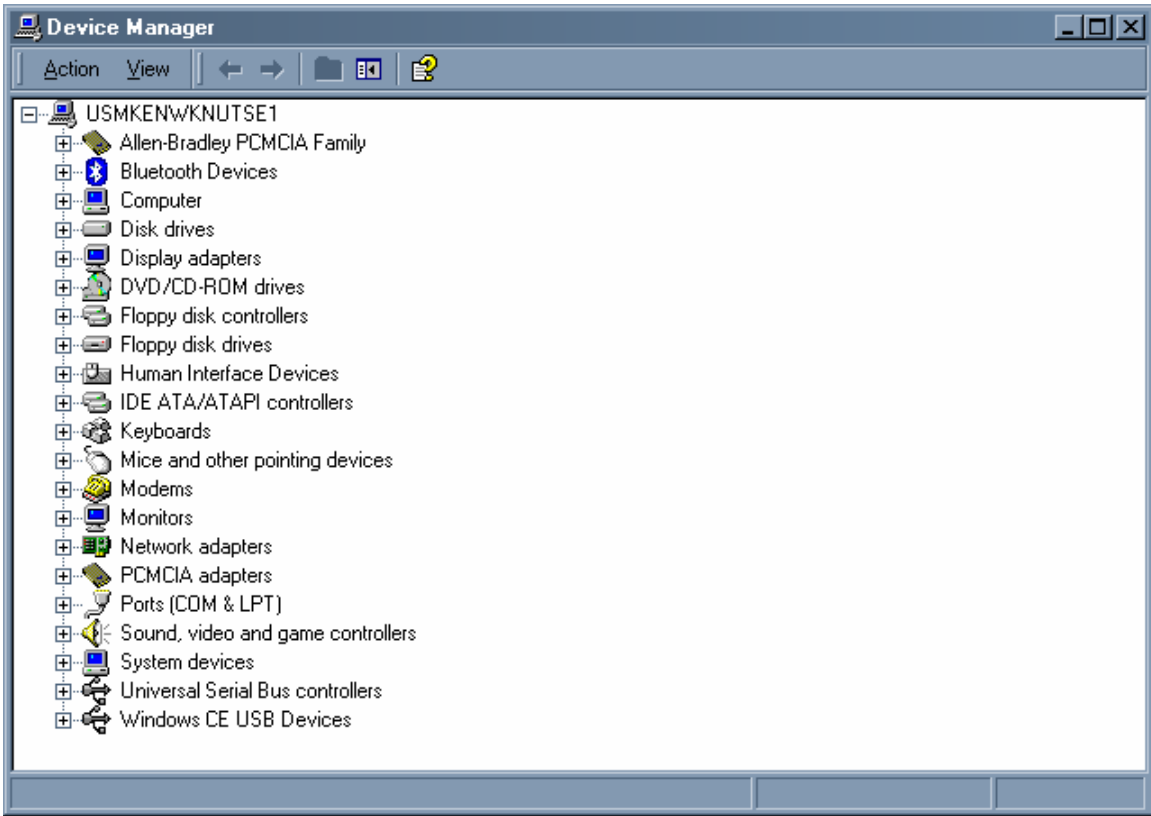
To find the serial port number, Right click on My Computer and choose the “Properties” selection.



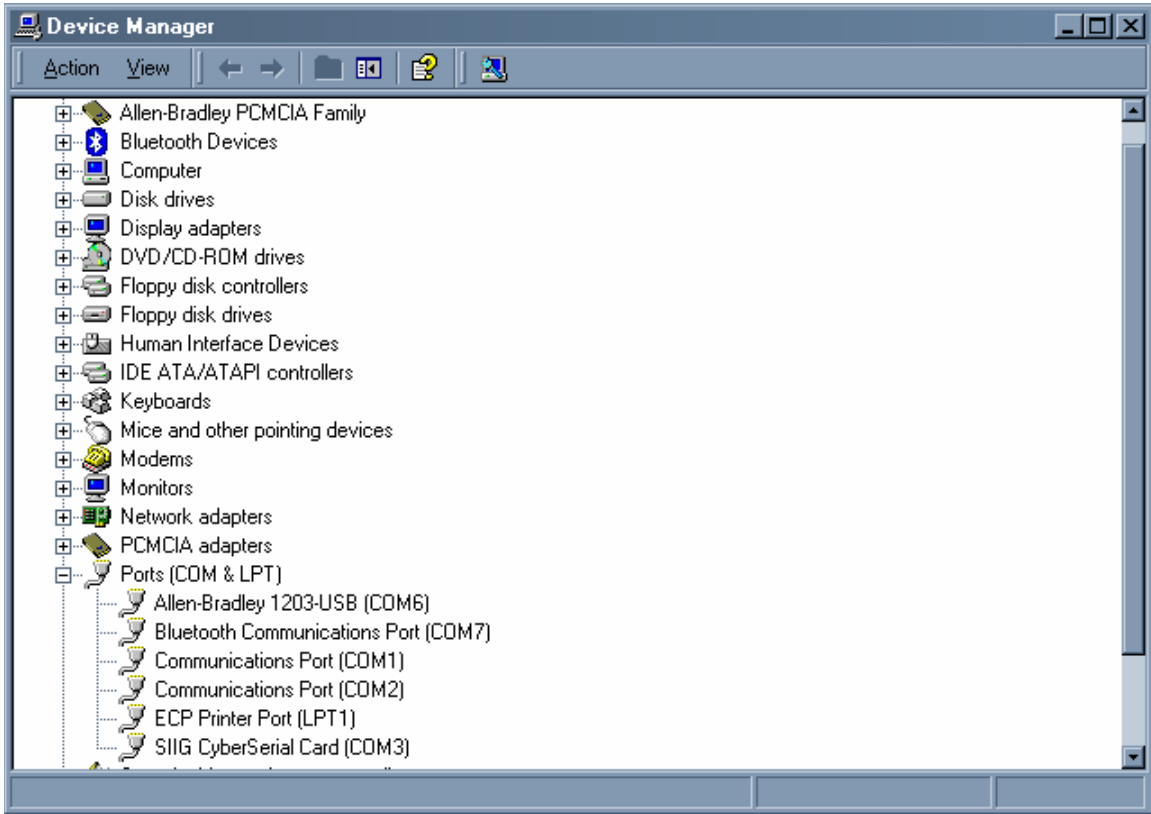
Select the Hardware tab.



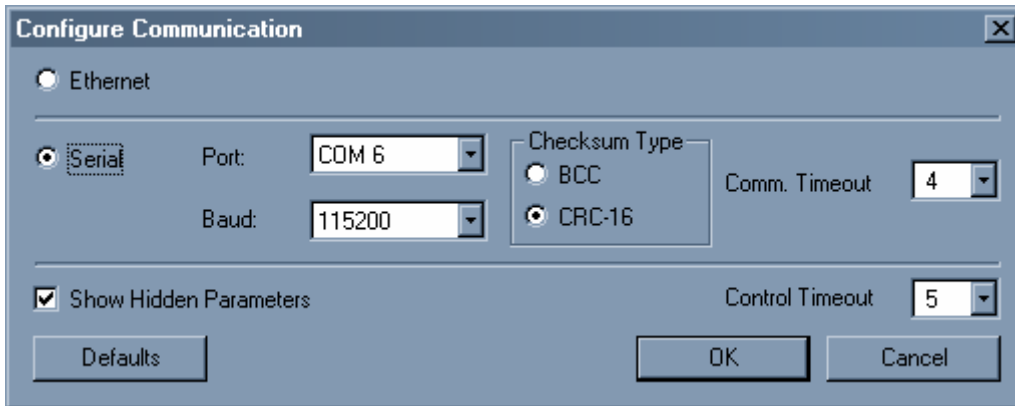
Click Device Manager



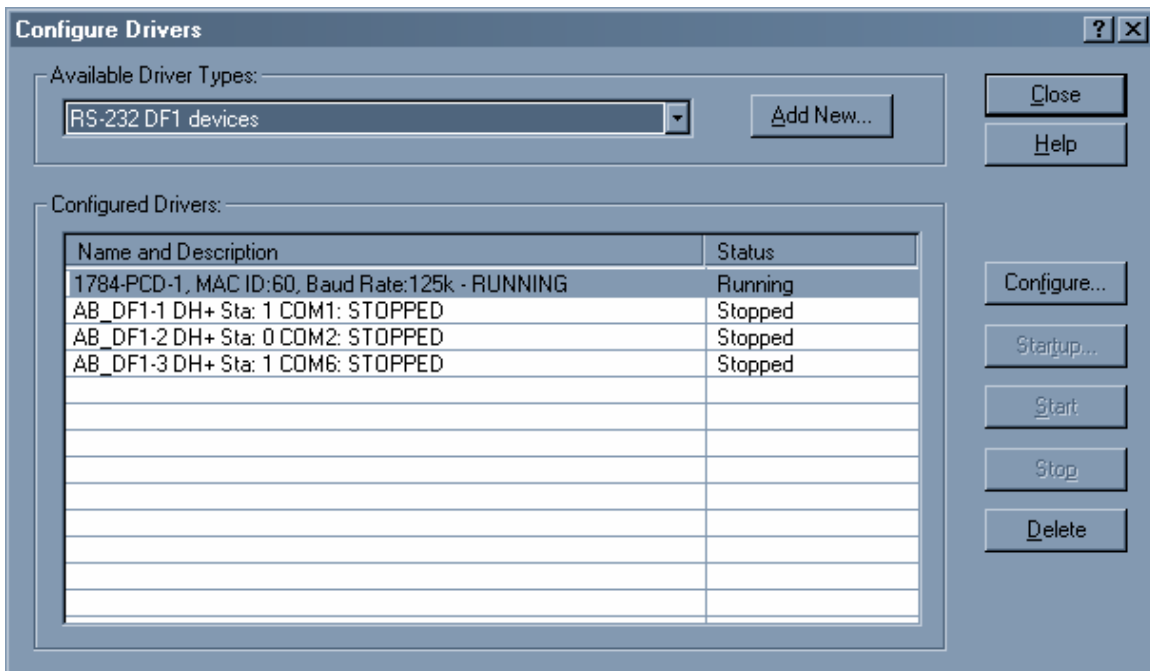
Select Ports.



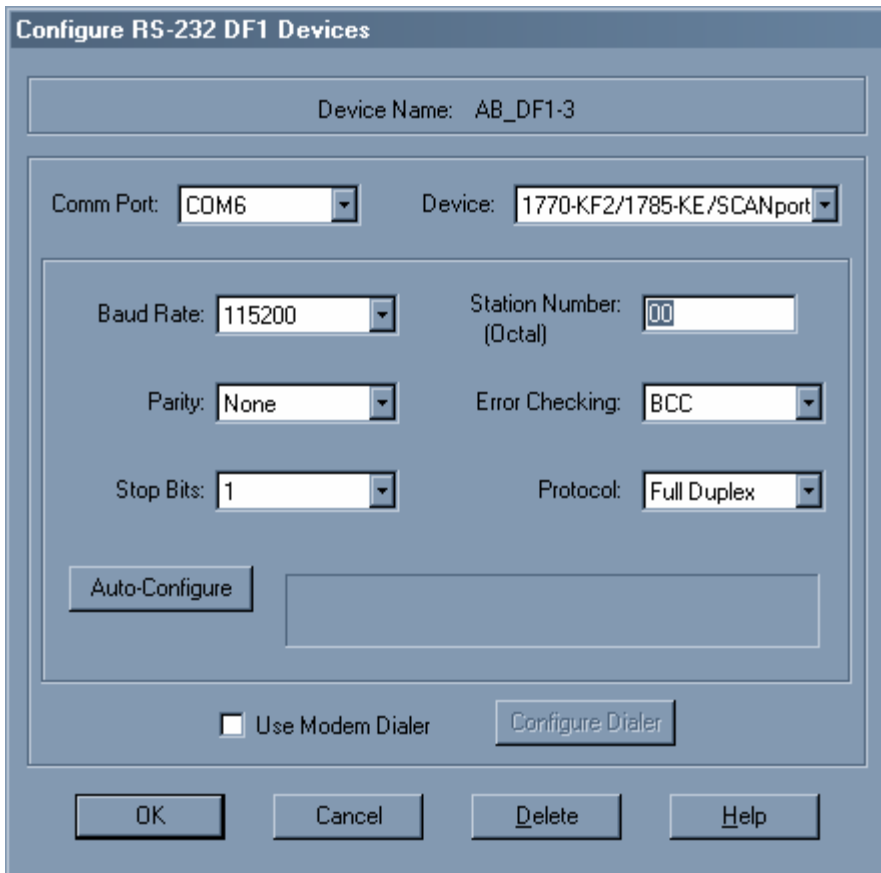
Here the serial port comes up as COM 6. Your results may differ. To connect to DriveExplorer Select Explore, Configure communication. Specify the port number found in the last step and set the baud rate to 115200.



If you are using DriveTools set up RSLinx for an RS-232 DF1 device.



Set up the driver as shown on the next page.



You are finished, connect as usual with your DriveExplorer or DriveTools application.