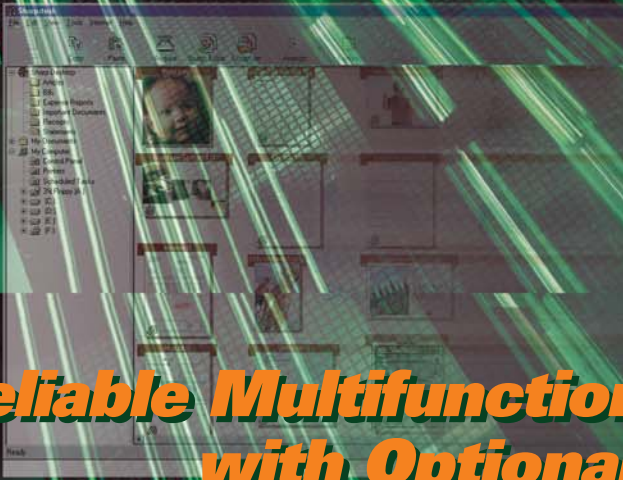


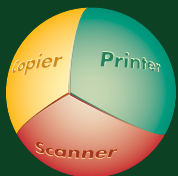
SHARP

AL-1225

Digital Laser Multifunction Solutions



**Reliable Multifunction Performance
with Optional Colour Scanning**



COPY

PRINT
OPTION

SCAN
OPTION

SHARPEDESK
OPTION



The ideal copier for small offices, the AL-1225 gives you professional-quality documents at a productive pace — day in and day out. For enhanced copying efficiency, it's equipped with convenient multi-bypass and single pass feeders. And as your imaging needs grow, it can be easily upgraded to become a convenient laser printer and full-colour scanner, complete with versatile document management software for your PC!

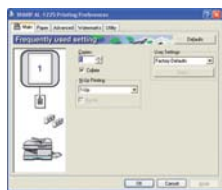
Speedy Copying with SOPM and SPF

The AL-1225's Scan Once/Print Many (SOPM) function stores a scanned page into memory, to quickly produce up to 99 copies at a continuous copy rate of 12 cpm*. Plus its quick first copy time of just 9.6 seconds saves valuable time when performing multiple short-run jobs. A Single Pass Feeder (SPF) is equipped as standard, providing efficient document feeding of up to 30 sheets.

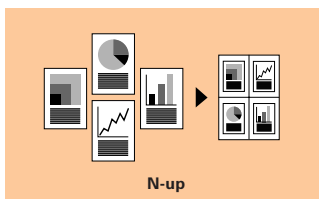


High-Performance Laser Printing (option)

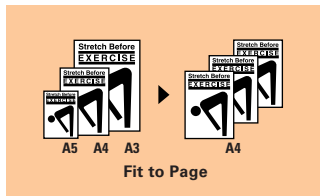
With the AL-12PKE Printer and Scanner Board, the AL-1225 can print from computers running popular Windows® operating systems at a rapid 12 ppm (max.). A number of convenient printing functions are also available.



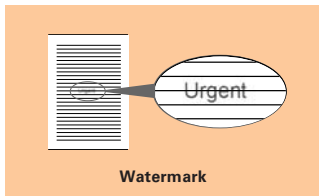
Printer driver screen



N-up



Fit to Page



Watermark

Full-Colour Scanning with Bundled Software (option)

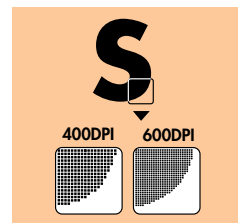
The AL-12PKE also gives the AL-1225 full-colour scanning capability, complete with powerful utility software. Button Manager lets you scan documents directly into applications on your PC. Up to six pre-registered applications are available, including Sharpdesk™, e-mail, PC-fax, OCR, Microsoft® Word and a different application of your choice. Operation is quick and easy — simply press the Scan button, select an application from the scan menu and press Start! Sharpdesk™ desktop document management software allows you to easily browse through, edit, sort and file your scanned documents.



Sharpdesk™ screen

600 dpi Printing Resolution

The AL-1225 uses a high-performance 600 dpi digital laser printing engine to produce ultra clear printouts and copies. This high printing resolution ensures that all details of the original document, including fine text, charts, and even photographs, come out clear and legible.



Simulated image

Other Key Features

- Digital Automatic Exposure Control ensures optimum copy quality
- 250-sheet paper tray and 50-sheet multi-bypass feeder
- Wide zoom range from 25 to 400% with 5 preset ratios
- Dual PC interface: USB 1.1 and IEEE 1284
- Space-saving interior document tray
- Energy-efficient operation with Pre-Heat and Auto Power Shut-Off modes
- Cost-efficient Toner Save mode

Specifications

GENERAL	
Type	Desktop
Paper size	Max. A4, min. A6
Paper capacity	300 sheets (250-sheet paper tray, 50-sheet multi-bypass feeder)
First copy time*1	9.6 seconds (Normal mode) 25.0 seconds (Pre-Heat mode)
	40.0 seconds (Auto Power Shut-Off mode)
Warm-up time*1	0 seconds
Power requirements	230-240v AC, ±10%, 50 Hz
Power consumption	Max. 1.0 kW
Dimensions (W x D x H)	518 x 492.5 x 380.4 mm
Weight	Approx. 19 kg without toner cartridge
COPIER	
Copy speed	12 cpm (A4 size)
Original size	Max. A4
Continuous copy	Max. 99 copies
Resolution	Scan AE/Manual: 600 x 300 dpi (default)*2 Photo: 600 x 600 dpi
Print: 600 dpi	
Zoom range	From 25 to 400%
Fixed copy ratios	25, 70, 86, 100, 141, 400% in the metric system
GDI PRINTER (optional AL-12PKE required)	
Printer speed	Max. 12 ppm (A4 size) for both IEEE 1284 and USB 1.1 connections
Memory	8 MB
Resolution	600 dpi
Interface	USB 1.1 x 1, IEEE 1284 bi-directional x 1
Supported OS	Windows NT® 4.0 (Workstation SP), Windows® 2000 (Professional), Windows® XP (Home/Professional), Windows® 95/98/Me
COLOUR SCANNER (optional AL-12PKE required)	
Resolution	600 x 1,200 dpi (setting range: 50 to 9,600 dpi*3)
Colour depth	24 bits (8 bits per RGB colour)
Scan speed	Max. 2.88 ms/line
Protocol	TWAIN, WIA (Windows XP), STI
Interface	USB 1.1
Supported OS	Windows® 98/Me, Windows® XP, Windows® 2000
Scanner utilities	Button Manager, Sharpdesk™ 2.7

*1: At rated voltage, 20°C, 65% RH. *2: Can be changed to 600 x 600 dpi by user simulation.
*3: Resolutions higher than 600 dpi are interpolated.
Design and specifications are subject to change without prior notice.
Colour variations to products may occur due to printing.
Windows and Windows NT are registered trademarks of Microsoft Corporation.

Distributed by:



Sharp minds. Sharp copiers.



SHARP CORPORATION OF AUSTRALIA PTY LTD
ABN 40 003 039 405
1 Huntingwood Drive, Huntingwood NSW 2148
PO Box 827 Blacktown NSW 2148
Tel: (02) 9830 4600 Fax: (02) 9672 1208
www.sharp.net.au

©SHARP CORP. Printed in Australia