



# Golden N Wireless Mini USB Adapter

Model # AWLL6075

User's Manual

Rev. 1.2

# Table of Contents

1. Introduction .....	2
1.1 Package Contents.....	2
1.2 Features.....	2
2. Install the Wireless Adapter .....	3
3. Connect to the Wireless Network.....	8
4. Configure Wireless Monitor.....	15
4.1 General.....	15
4.2 Profile Settings .....	16
4.3 Available Network.....	18
4.4 Status .....	19
4.5 Statistics.....	20
4.6 Wi-Fi Protected Setup (WPS).....	21
4.7 Configuring Wireless Security .....	26
4.8 Ad-hoc and Peer-to-Peer Wireless Networks.....	31
4.9 About .....	33
Appendix A - Specification .....	34
Technical Support.....	35

# 1. Introduction

Congratulations on your purchase of the Golden N Wireless Mini USB Adapter. The super compact mini design gives you more flexibility and its high bandwidth combined with extended wireless coverage delivers fast and reliable connection for all of your networking applications. The adaptor will yield a higher throughput is it is used with other Airlink101® Wireless N products.

A full range of security features such as WEP, WPA-PSK, and WPA2-PSK will provide you the highest level of wireless network security. The bundled wireless utility allows you to set up the adapter with an easy-to-use user interface. The Golden N Wireless Mini USB Adapter works with 802.11g and 802.11b network devices ensuring compatibility with your existing wireless products.

## 1.1 Package Contents

Before you begin the installation, please check the items of your package. The package should include the following items:

- Golden N Wireless Mini USB Adapter
- Quick Installation Guide
- Installation CD (Driver/Utility/Manual)

## 1.2 Features

- Higher data rate and broader coverage with Wireless N technology
- Built-in Easy Setup Button for easy connection to the existing wireless network
- WPA2, WPA, and WEP enhanced security to provide a full protection for your wireless connection
- Great for environments that need higher wireless data traffic
- Fully backward compatible with 802.11b/g
- Light-weight, super compact mini design
- RoHS compliant

## 2. Install the Wireless Adapter

This section provides instructions on how to install the Golden N Wireless Mini USB Adapter. The driver is installed along with the utility. For Windows 7, only driver will be installed.

For Macintosh users, you can find the software and installation instructions for MAC under the **MAC** folder on the provided CD.

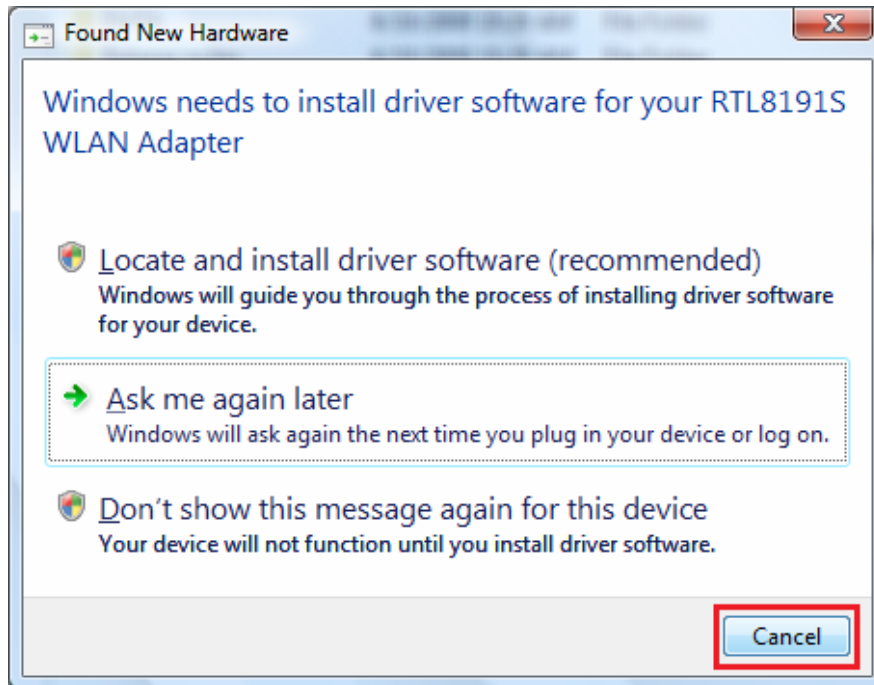
**Step 2.1** Insert the USB adapter into an available USB port of the computer.

**Step 2.2** Click **Cancel** to quit the wizard.

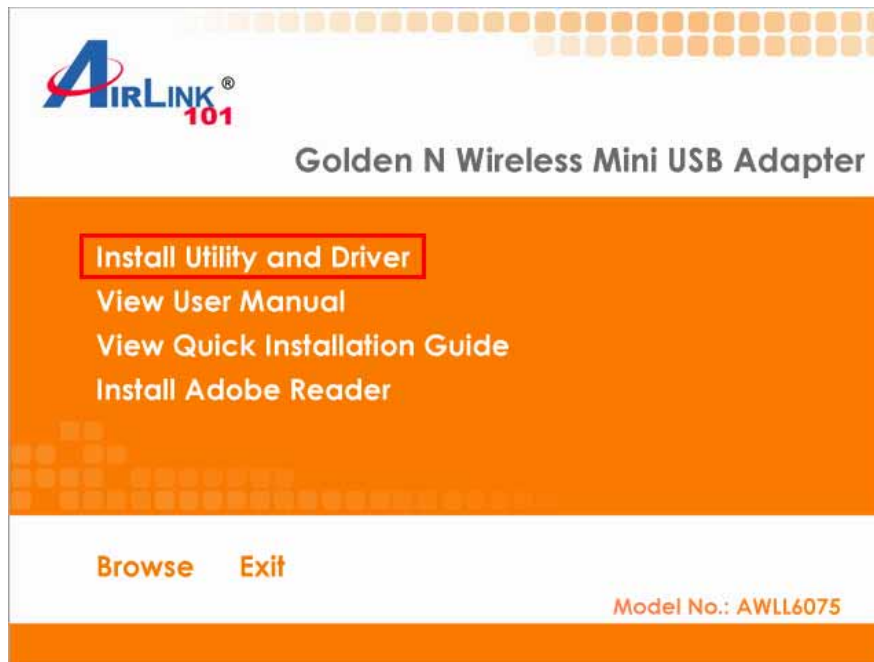
**Windows 2000/XP Users:**



**Windows Vista/7 Users:**



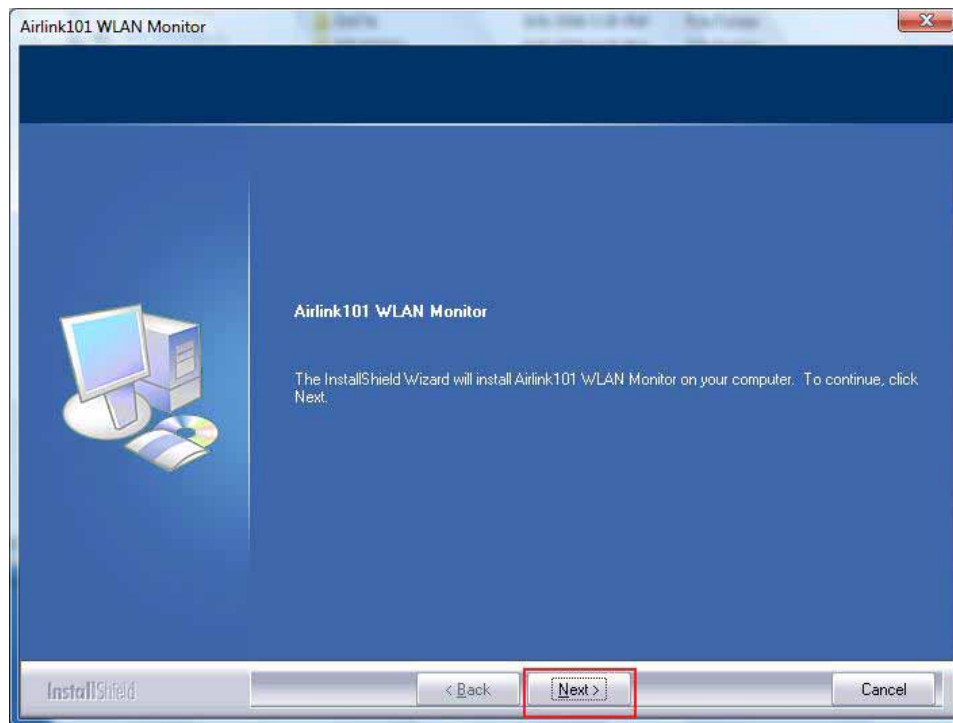
**Step 2.3** Insert the Installation CD into your CD drive. When the autorun screen pops up, select **Install Utility and Driver** from the menu.



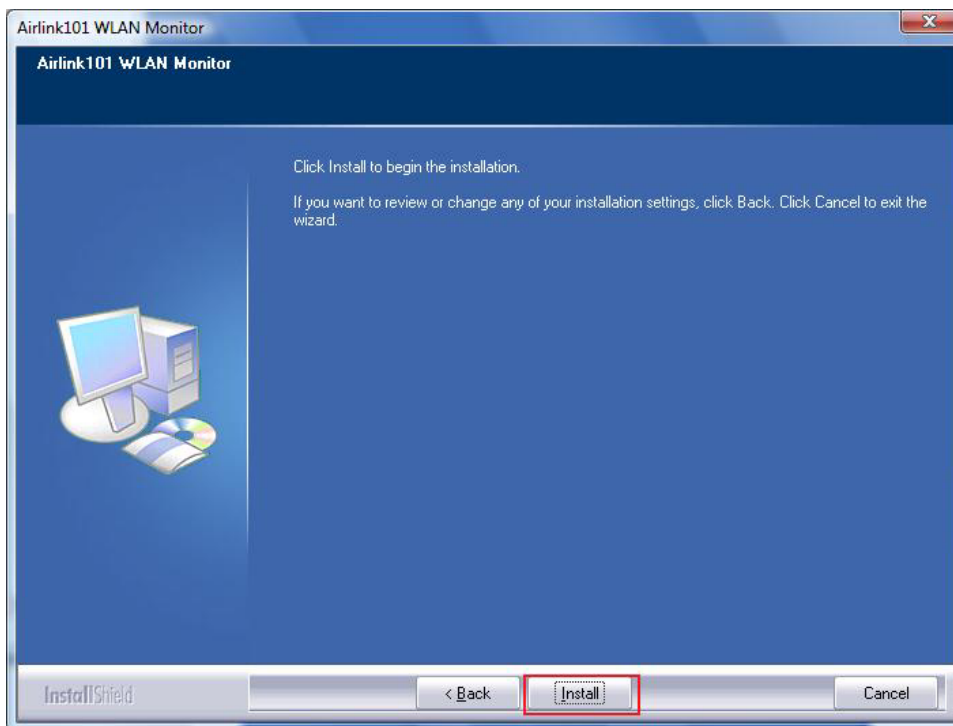
**Windows 2000/XP Users:** If the Autorun screen doesn't appear automatically, go to **Start, Run**, and type **D:\Utility\Setup.exe** (where **D** is the letter of your CD drive) and click **OK**.

**Windows Vista/7 Users:** When you get a warning message make sure you click **Allow** to give permission to continue with the installation of the driver software.

**Step 2.4** The Airlink101 WLAN Monitor screen will popup. Click **Next** at the screen.

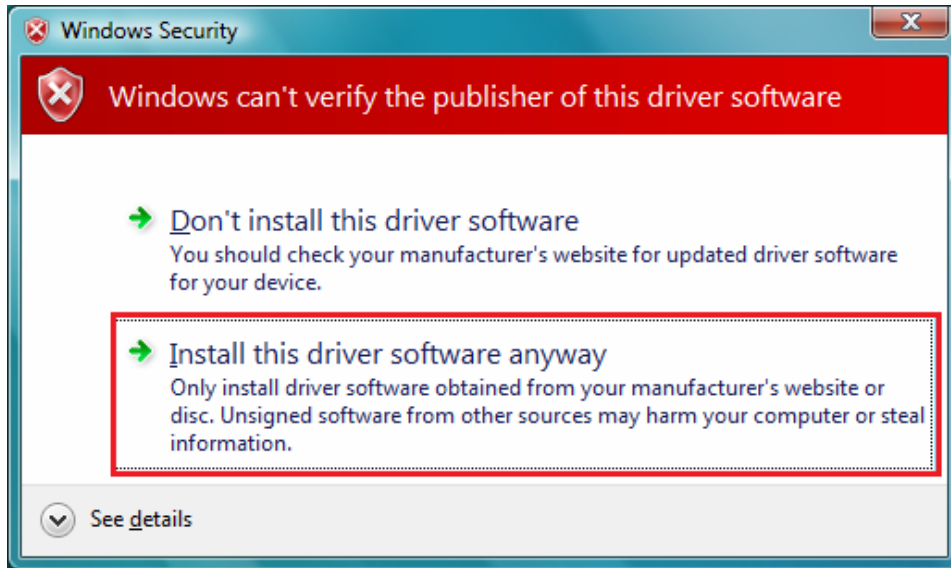


**Step 2.5** Click **Install** to begin the installation.

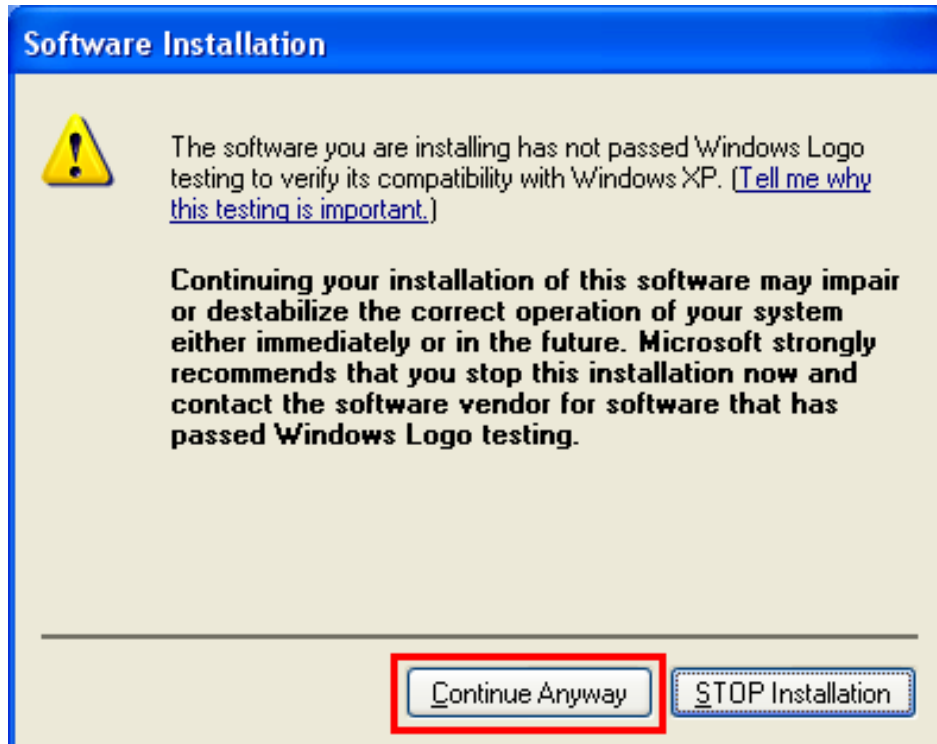


**Step 2.6** Give Permission to Windows to install the driver software.

**Windows Vista/7 Users:** Click the **Install this driver software anyway** button.



**Windows 2000/XP Users:** Click **Continue Anyway** at the Windows Logo Screen.



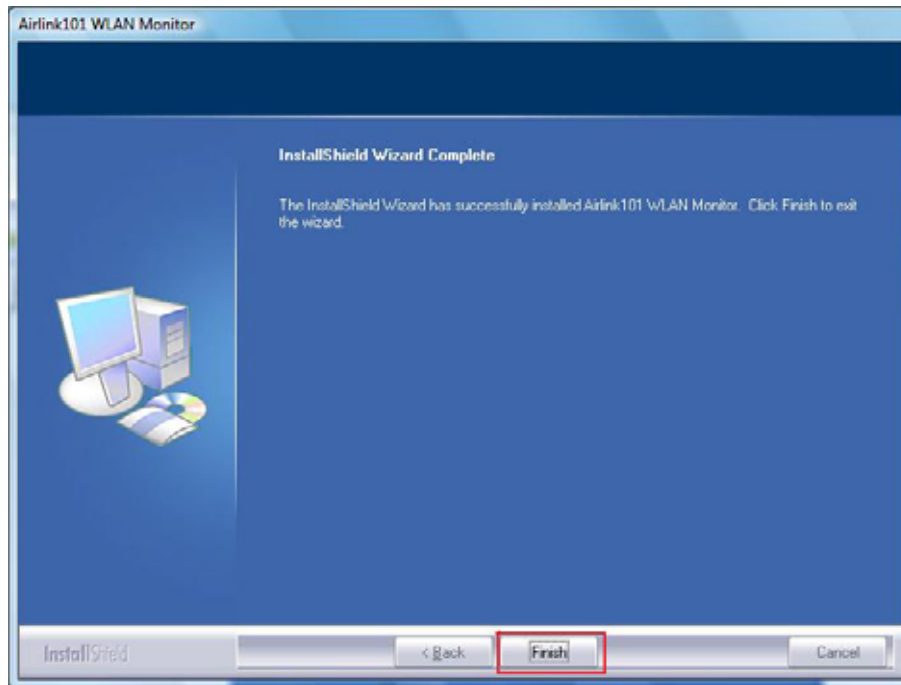


You will see the following screen when Windows is installing the driver for Airlink101 Wireless Adapter and the Airlink101 Wireless Monitor.

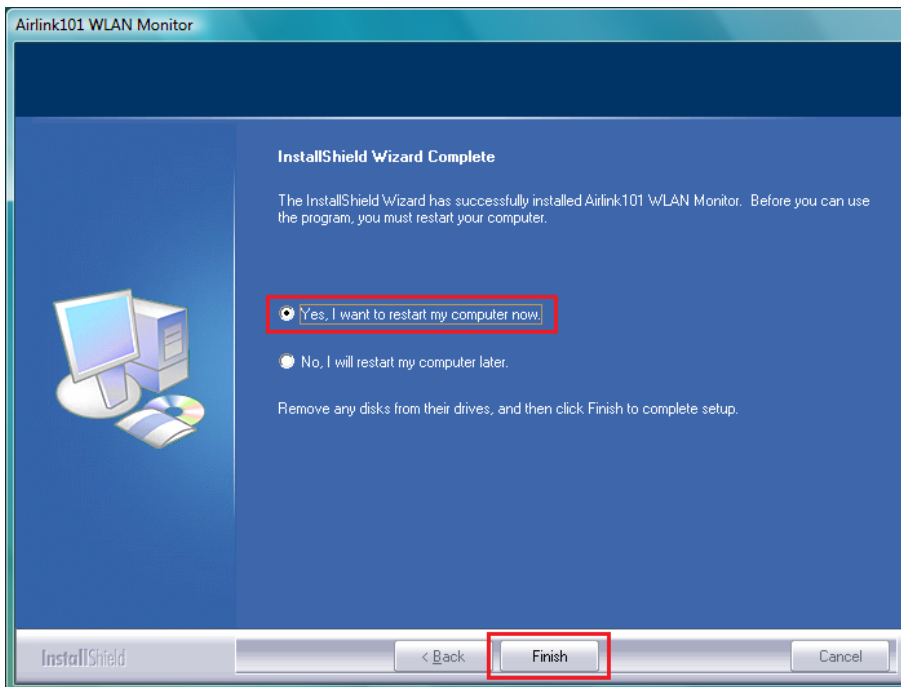


**Step 2.7** Click **Finish** to complete the installation.





**Step 2.8** Select **Yes, I will restart my computer now**. Click **Finish** to reboot the computer.



**The driver and utility have been installed successfully. Please continue to the next chapter.**

### 3. Connect to the Wireless Network

This section describes how to connect your wireless adapter to a wireless network.

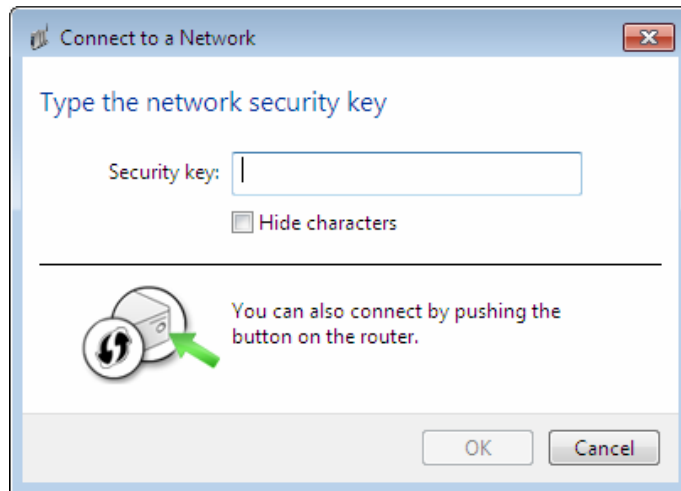
#### For Windows 7 Users:

You will need to use the utility built in Windows 7 to manage this wireless USB adapter. Currently, Airlink101 Wireless Monitor does not support on Windows 7.

**Step 3.1** Click on the wireless icon in the system tray at the bottom right-hand corner of your screen. A list of available network will pop up. Select the one you want to connect to and click **Connect**.

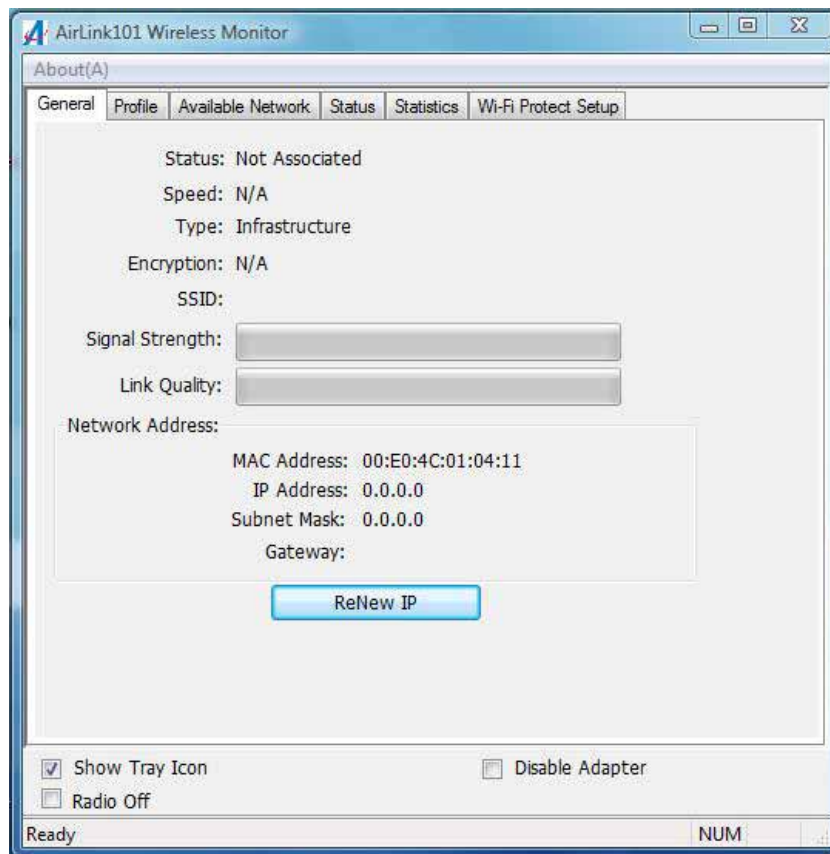


**Step 3.2** Enter the network security key if the wireless network you are attempting to connect to has wireless encryption enabled. Click **OK**. The connection should be now established.



### For Windows Vista/XP/2000 Users:

**Step 3.1** Open the Airlink101 Wireless Monitor utility by double clicking on the icon in the system tray at the bottom right-hand corner of your screen.



### Step 3.2

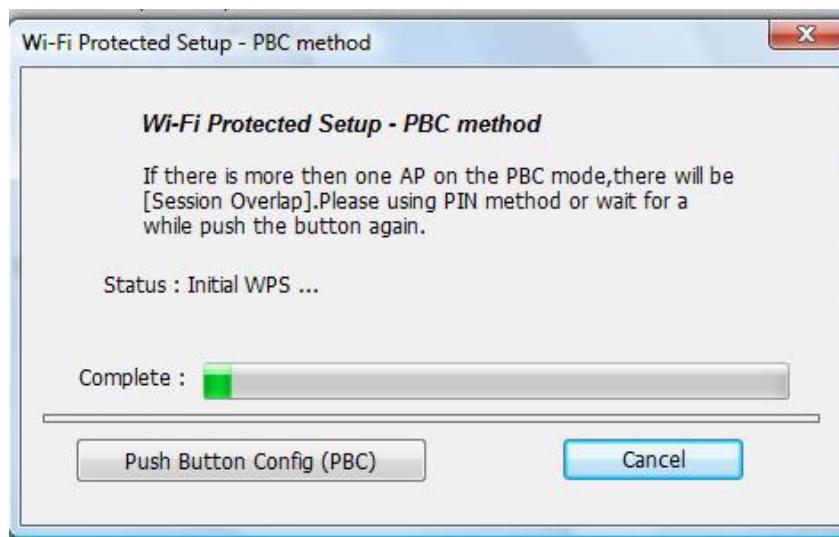
The Easy Setup Button (Wi-Fi Protected Setup) is a new and easy way to configure the encryption for your wireless network clients. In order to use it, you need to have a router that supports this feature.

Note: If your router doesn't support Easy Setup Button function (Wi-Fi Protected Setup), please go to **Step 3.3**.

1. Push the Easy Setup Button of the Adapter.



The 'Wi-Fi Protected Setup – PBC method' window will popup to acknowledge you the Adapter is starting to establish a connection.



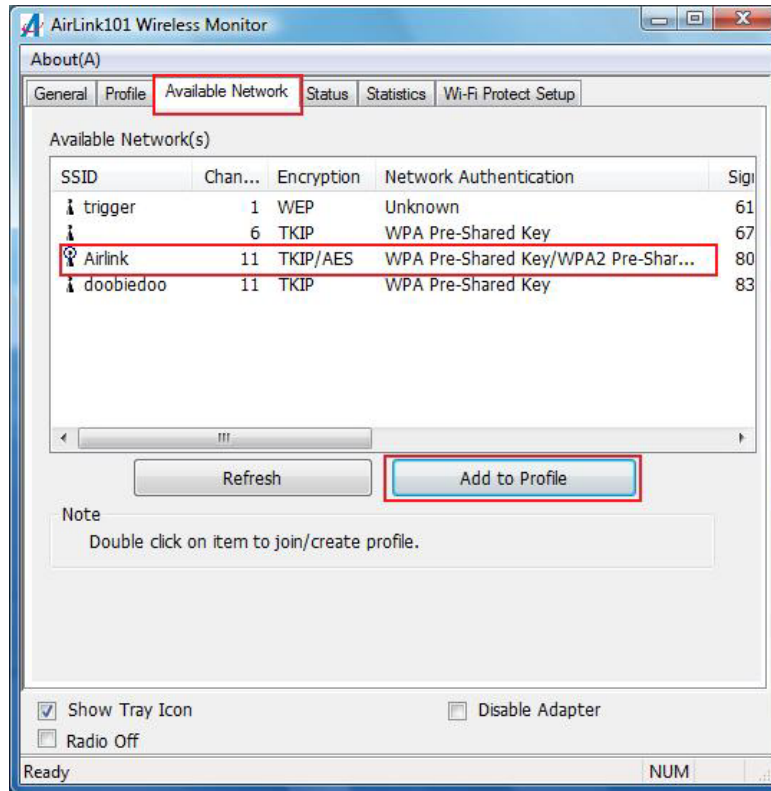
2. Within the following 2 minutes, push the Easy Setup Button (WPS Button) on the back of the Router. The picture shows Airlink101 AR675W Wireless N Green Router.



3. The router will now start to synchronize the encryption settings with the wireless adapter. The connection will be established in few seconds. Continue to Step 3.5.

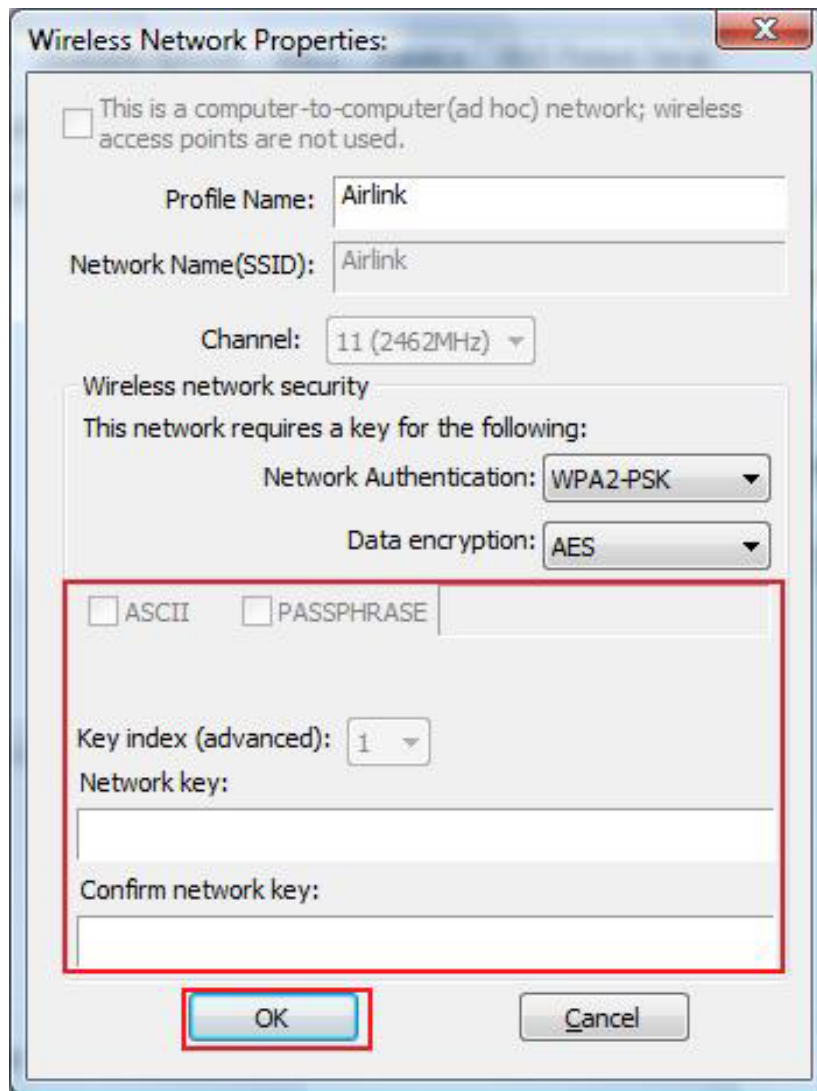
If the connection is not able to establish, continue to Step 3.3.

**Step 3.3** Click the **Available Network** tab of the Wireless Monitor, select the wireless network that you wish to connect to, and click **Add to Profile**.



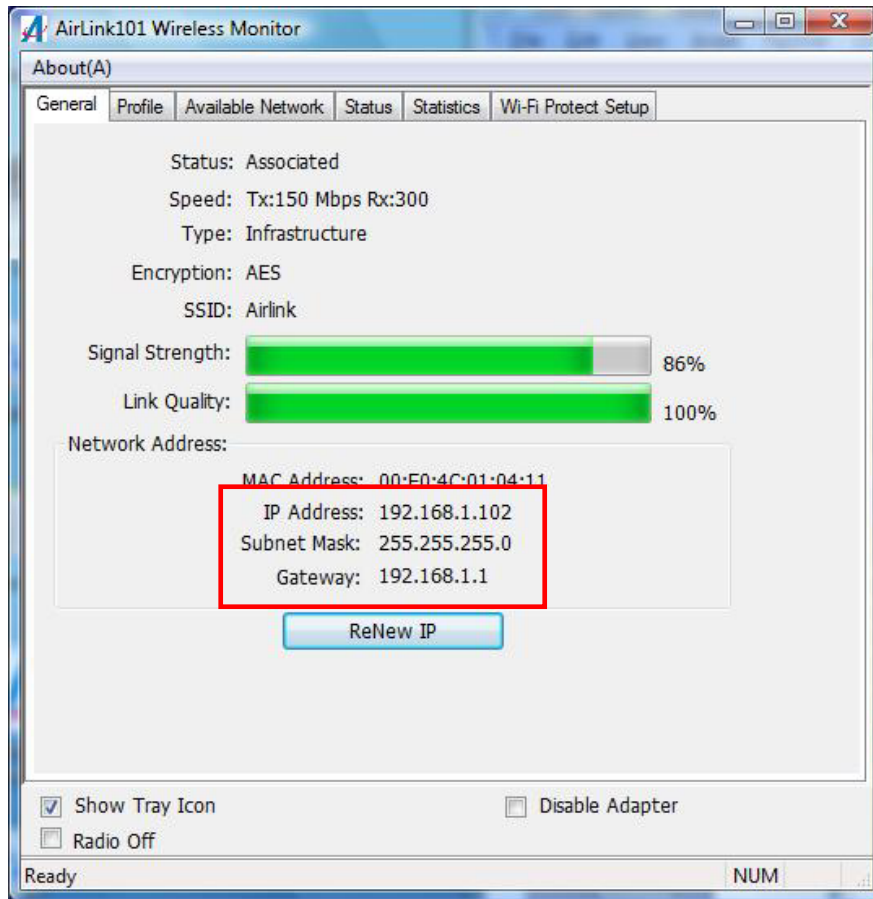
If the network that you are attempting to connect does not have encryption enabled, you will receive a warning about connecting to an unsecured network. Click **OK** to complete the connection. Go to **Step 3.5**.

**Step 3.4** Enter the wireless security key into the **Network Key** and **Confirm Network Key** boxes. The wireless adapter will automatically detect the type of Network Authentication and the Data encryption, so it is recommended to keep these settings as they are. Click **OK** after you finished.



Please refer to the User's Manual on the provided CD for instructions on configuring the wireless network security settings.

**Step 3.5** The connection should be now established. Under the utility Airlink101 Wireless Monitor, go to General tab to check the status of the connection. Verify that **IP Address**, **Subnet Mask** and **Gateway** have valid numbers assigned to them (instead of all 0's). The Status should be Associated, and there should be green bars next to Signal Strength and Link Quality.



**Congratulations! You have now connected to the wireless network successfully.**

## Troubleshooting

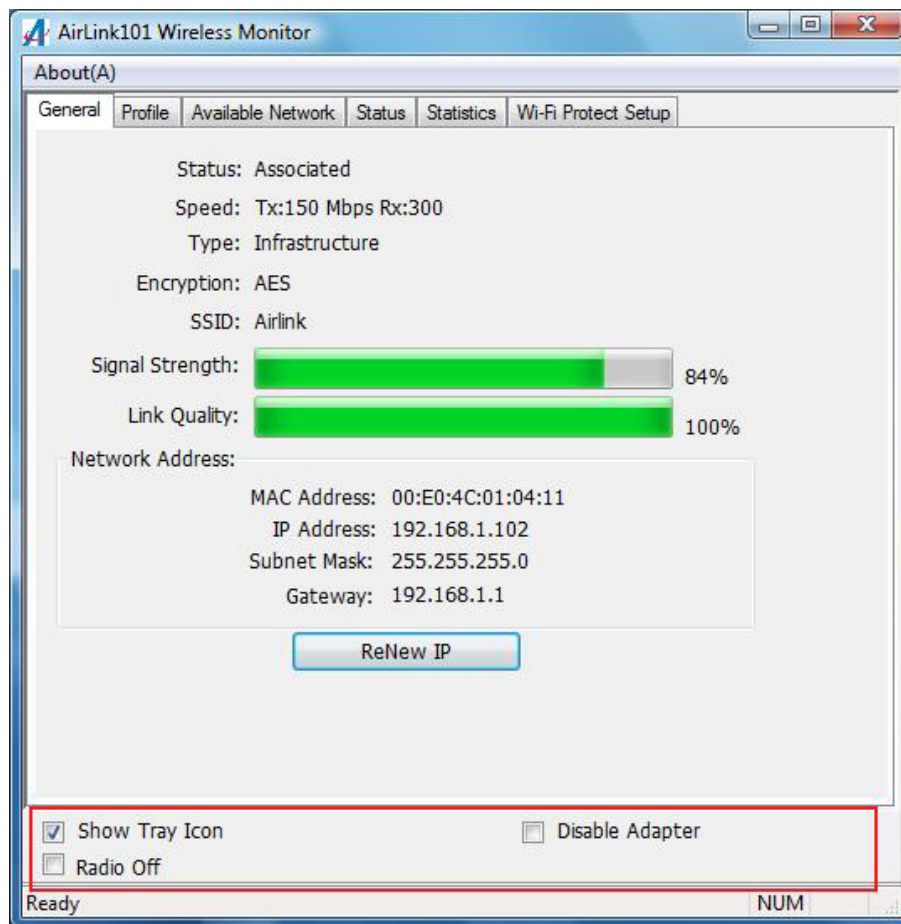
1. If you cannot open the wireless monitor utility, make sure that the USB adapter is inserted firmly into the USB port.
2. If you cannot connect to the wireless router, you may want to double check the wireless security settings on the router. The network key you entered in Step 3.4 must match with the settings on the wireless router.
3. If you are experiencing problems with the connection such as low signal strength, slow connection speed, or unstable wireless connection, you can try to tune your router's signal by changing the channels on the router and/or by adjusting the direction of the antenna(s). You do not need to change the channel on the Adapter; it will automatically pick up the new channel after you reboot the router. Your router has 11 different channels to choose from. Keep going through the channels until you find one that gives you a stable connection. For instructions on changing channels, refer to the documentation that comes with the router.

## 4. Configure Wireless Monitor

This section describes the various functions of the AirLink101 Wireless Monitor that you can configure, including the settings of wireless encryption.

### 4.1 General

The **General** tab provides you with the status of the current connection, including signal, network name (SSID) and IP Address.



At the bottom you have options for controlling the utility and adapter.

**Show Tray Icon** allows you to show or hide the tray icon for the utility.

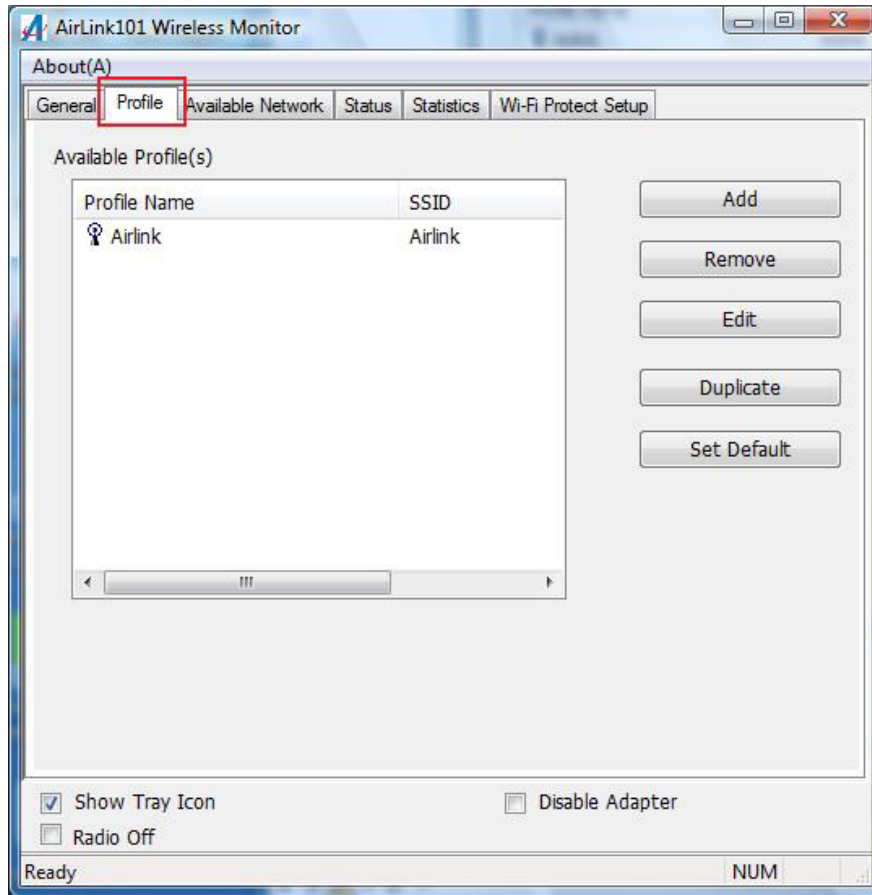
**Radio Off** disables the wireless function of the adapter.

**Disable Adapter** will completely disable the wireless adapter.



## 4.2 Profile Settings

The **Profile** tab lists the current profiles and allows you to create new profiles.

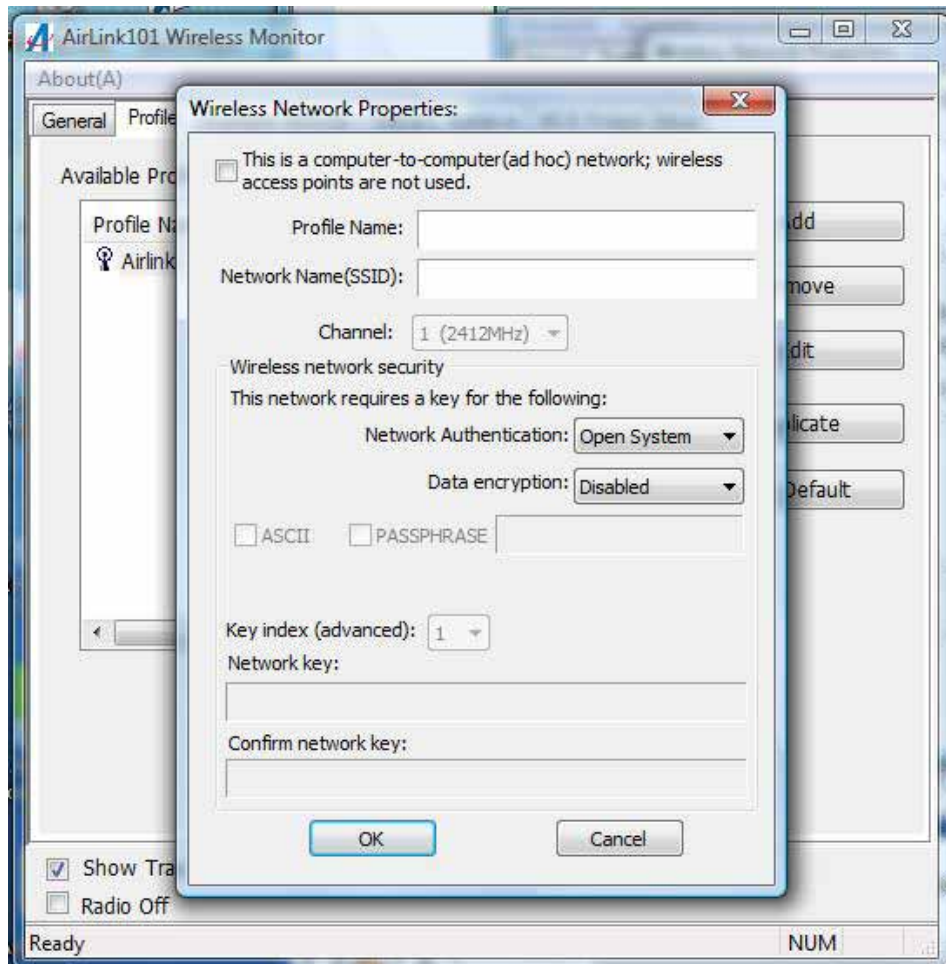


The **Available Profile(s)** box lists all the profiles that you've created for your network. Profiles are automatically created and added to this list when you connect to new networks. You can also manually add the profiles.

To modify an existing profile, select the profile from the **Available Profile(s)** box and click on **Edit**.

To create a new profile, click on **Add**.

The **Profile** box will appear allowing you to specify the settings for your new profile or to change settings for your existing profile.



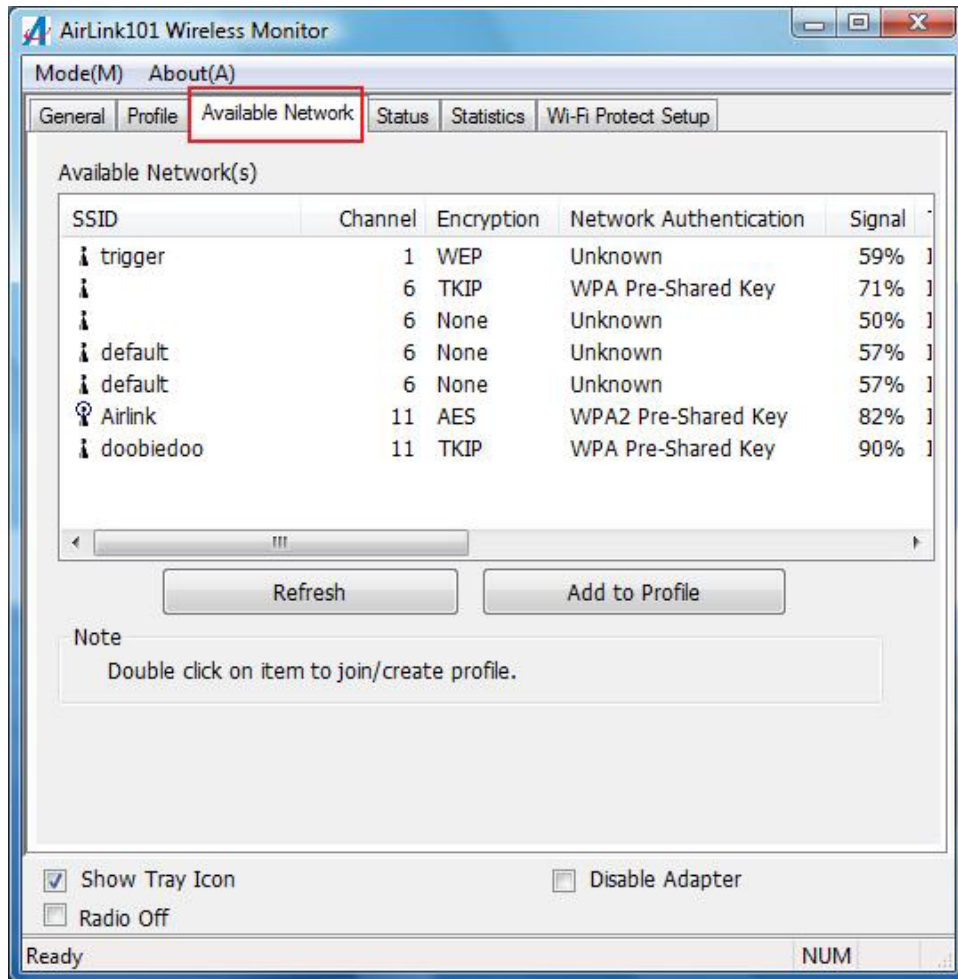
Enter a **Profile Name** and **SSID**. Enter the encryption settings for the profile. Click **OK** to save the changes.

The Configuring Encryption section (section 4.7) will give you the information of how to set the different options of the wireless network encryption settings.

### 4.3 Available Network

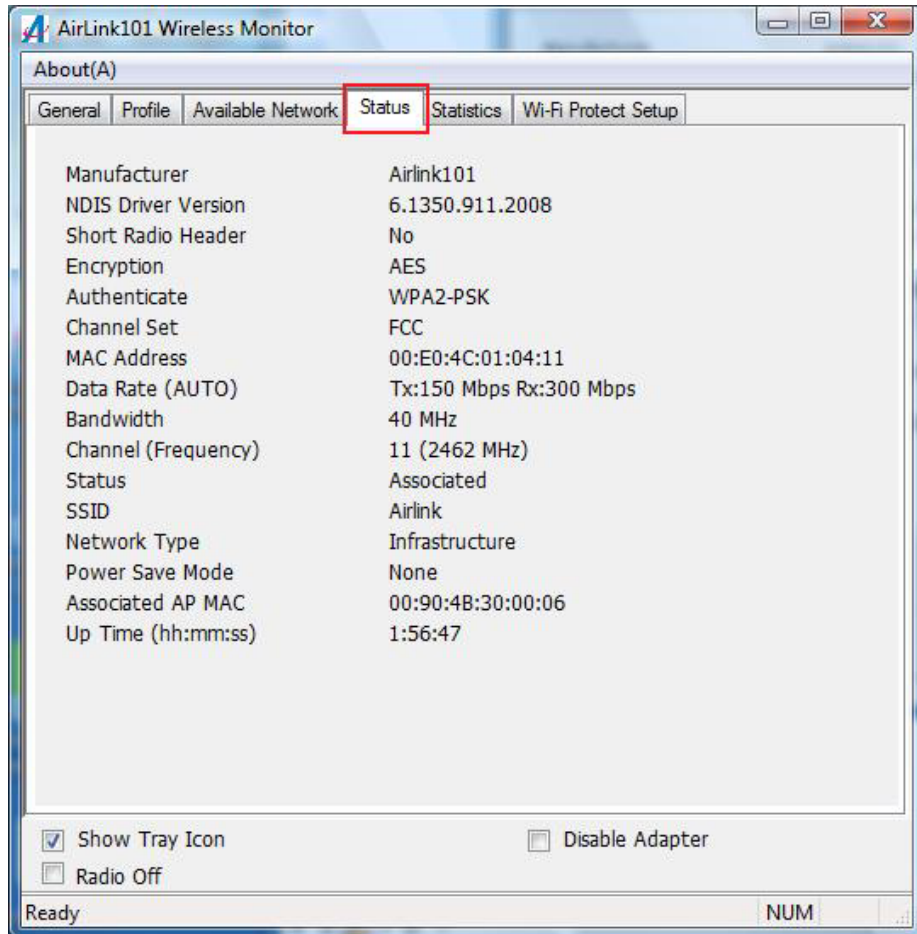
The Available network tab lists all of the networks that the adapter detects in your area.

Clicking **Refresh** will refresh the list. To connect to a network, select a network from the list and click **Add to Profile**.



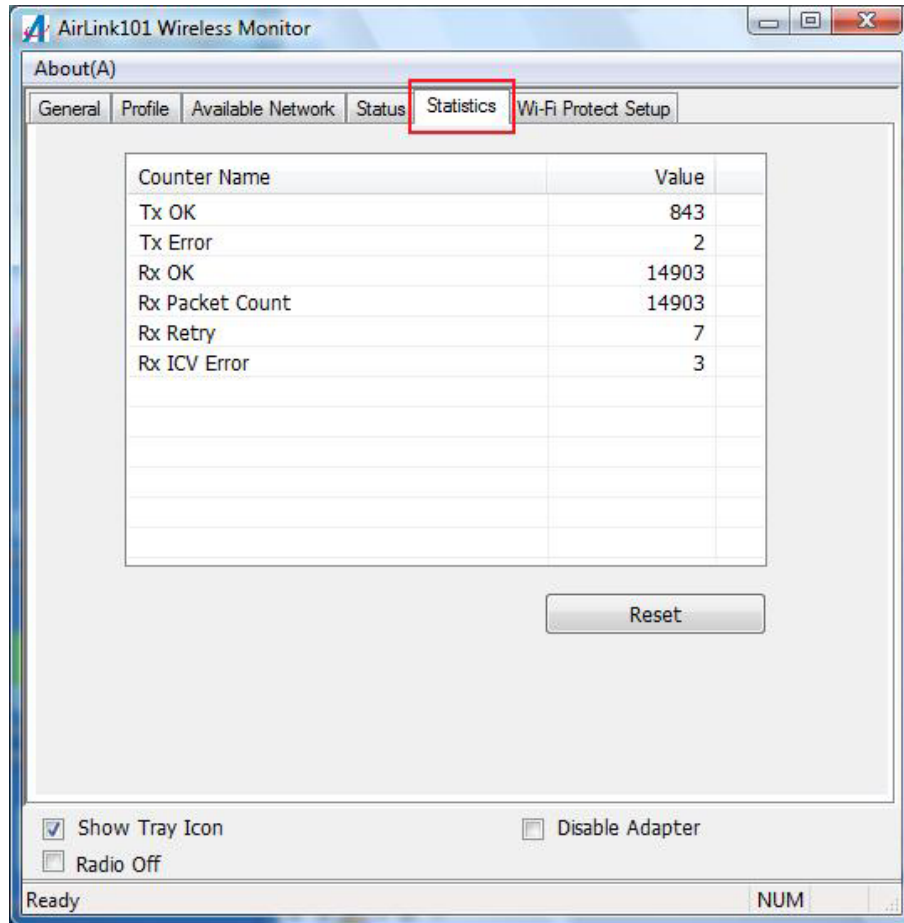
## 4.4 Status

The status section provides you with a list of information about the current status of the adapter.



## 4.5 Statistics

The Statistics section gives you information about transmit and receive packet count.

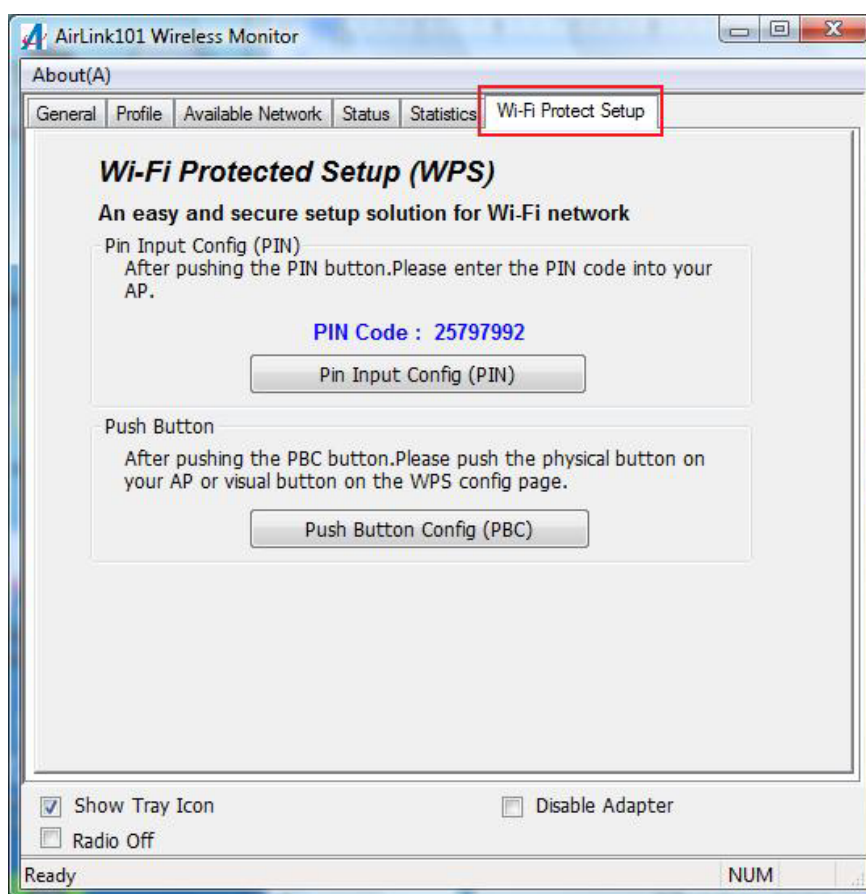


## 4.6 Wi-Fi Protected Setup (WPS)

The Wi-Fi Protected Setup™ (WPS) is a new and easy way to configure the encryption for your wireless network clients. In order to use it, you need to have a router that supports this feature, like the AR670W or AR675W Airlink101 Wireless N Router. You also need to configure the wireless encryption on the router; you should find the instructions for configuring it in the router User Manual. If your wireless router does not support WPS, you will need to set up the wireless security manually and you can skip this section.

We are using the AWLL6075 Golden N Wireless Mini USB Adapter and the AR675W Airlink101 Wireless N Green Router to illustrate the following setup instructions.

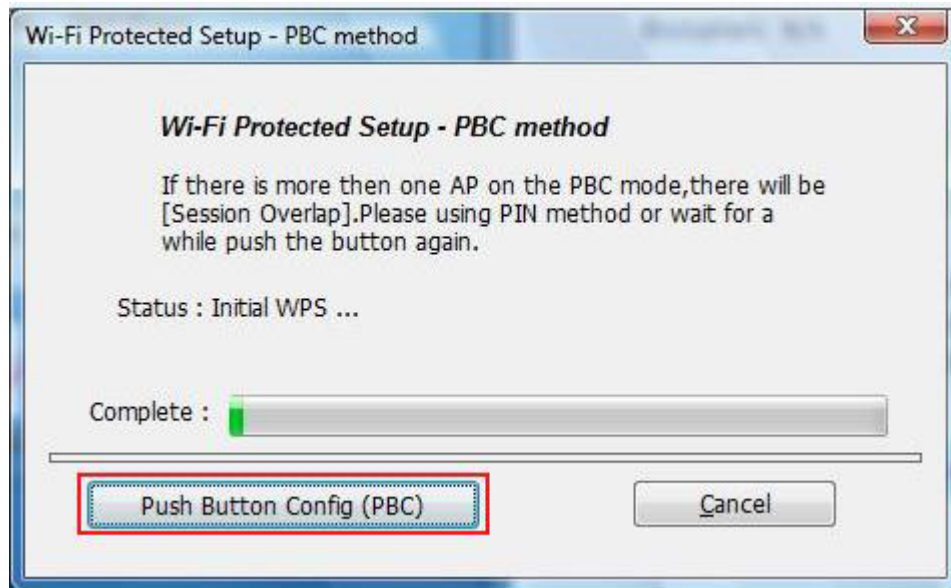
**Step 4.6.1** Open the Airlink101 Wireless Monitor. Click the **Wi-Fi Protect Setup** tab.



Choose your configuration method:

- For **Push Button method**, click Push Button Config (PBC) tab, continue to Step 4.6.2a
- For **Pin Input Config** method, click Pin Input Config (PIN) tab., continue to Step 4.6.3a

**Step 4.6.2a** If you choose the Push Button method; click the **Push Button Config (PBC)** tab.



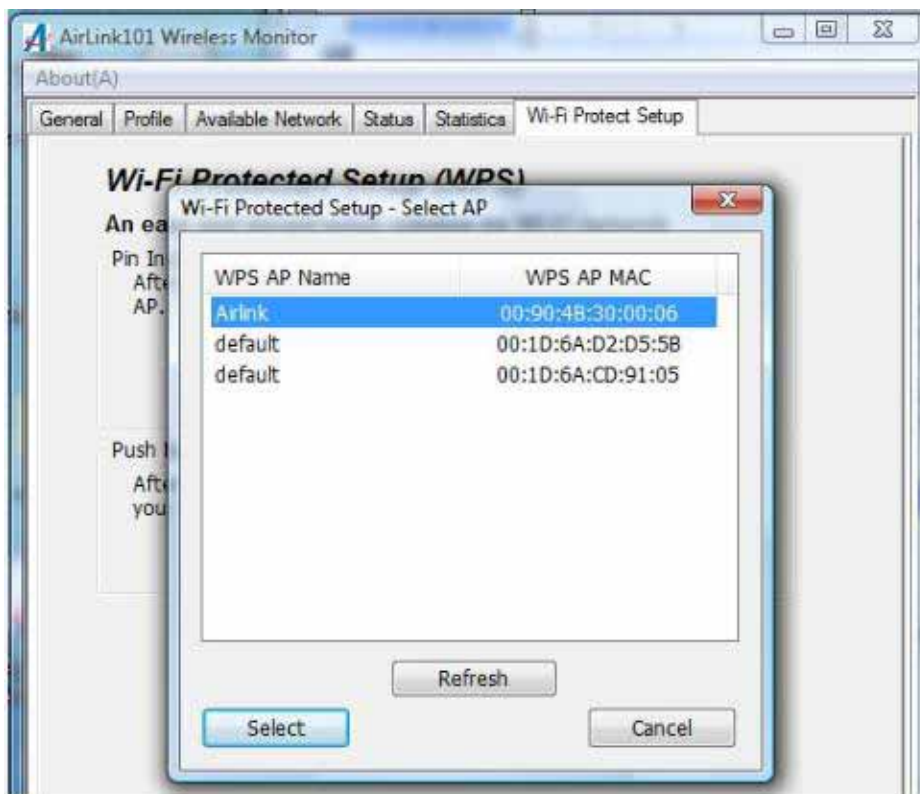
**Step 4.6.2b** Push the Easy Setup Button (WPS button) on the router, and it will now start the handshake with wireless adapter. The connection will be built up in couple minutes.



**Step 4.6.3a** If you choose the Pin Code method, write down the **PIN** and click **Yes**.



Select the Access Point that you want to connect, and then click **Select**.

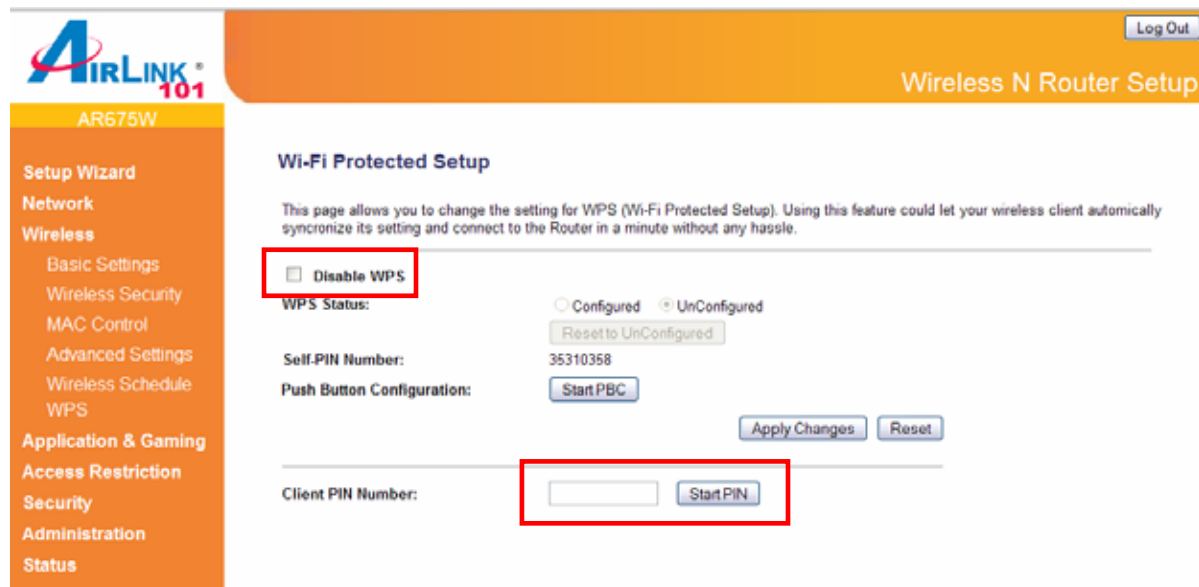






**Step 4.6.3b** Log on to your router's configuration page from the web browser and click on **Wireless**. Then click **WPS**.

**Step 4.6.3c** Make sure that the Disable WPS is not checked. Enter the Pin Code in the **Client Pin Number** box and click **Start PIN**.



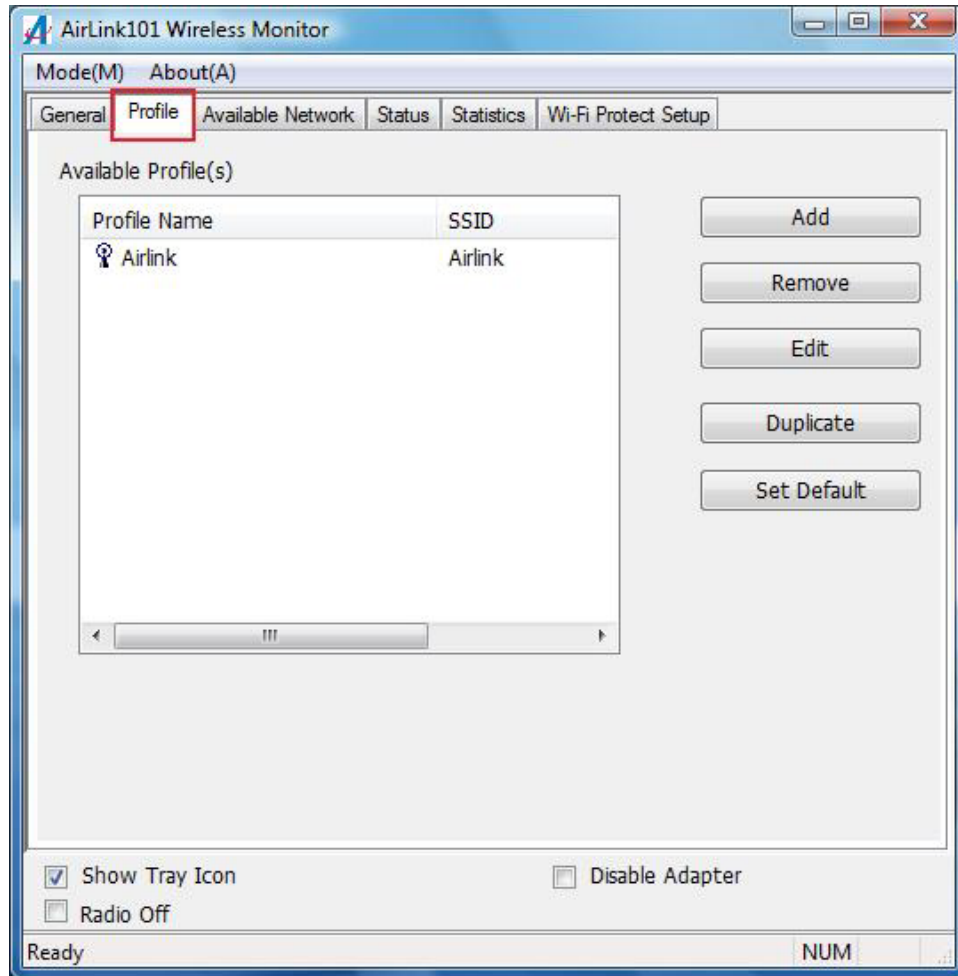
After a few moments both the router configuration screen and the adapter configuration screen should show a message telling you that a connection is established.

**Note:** If you cannot connect successfully with WPS, you need to log in to your router's configuration and click on **Wireless**. Then click **Wireless security**. Make sure that the Disable WPS box is NOT checked, refer to Step 4.6.3b.

## 4.7 Configuring Wireless Security

This section describes the different types of encryption available and how to configure them. In most cases, **encryption will be automatically configured and all you need is to enter the Network key**, as described in Section 3, Step3.2. If you are creating a custom profile, you need manually configure the encryption settings.

Open the **Wireless Monitor** utility, click **Profile** tab and then click **Add**.

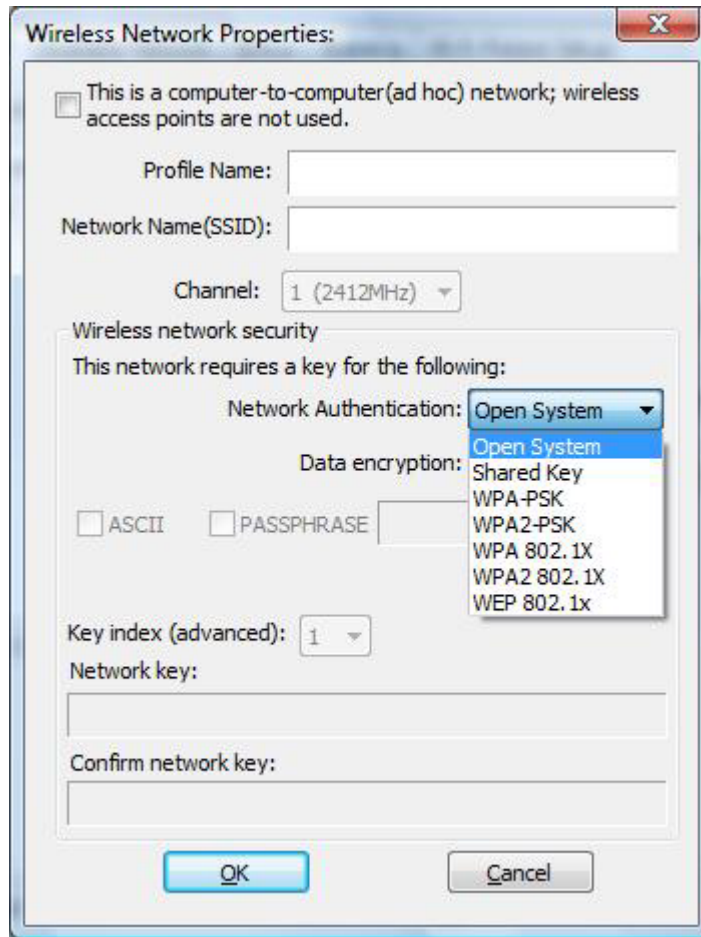


The different options of wireless network encryption settings are:

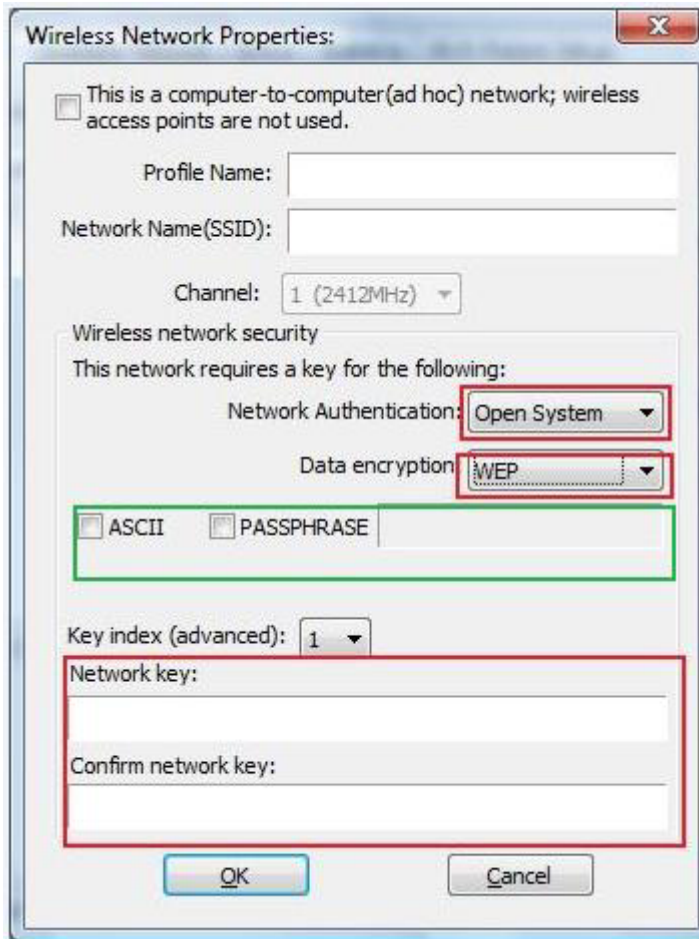
**Disable:** No encryption in use

**WEP:** The most popular but least secure form of encryption

**WPA/WPA2-PSK:** The most secure and recommended level of encryption



### 4.7.1 Configuring WEP encryption



Select **WEP** from the **Data encryption** box.

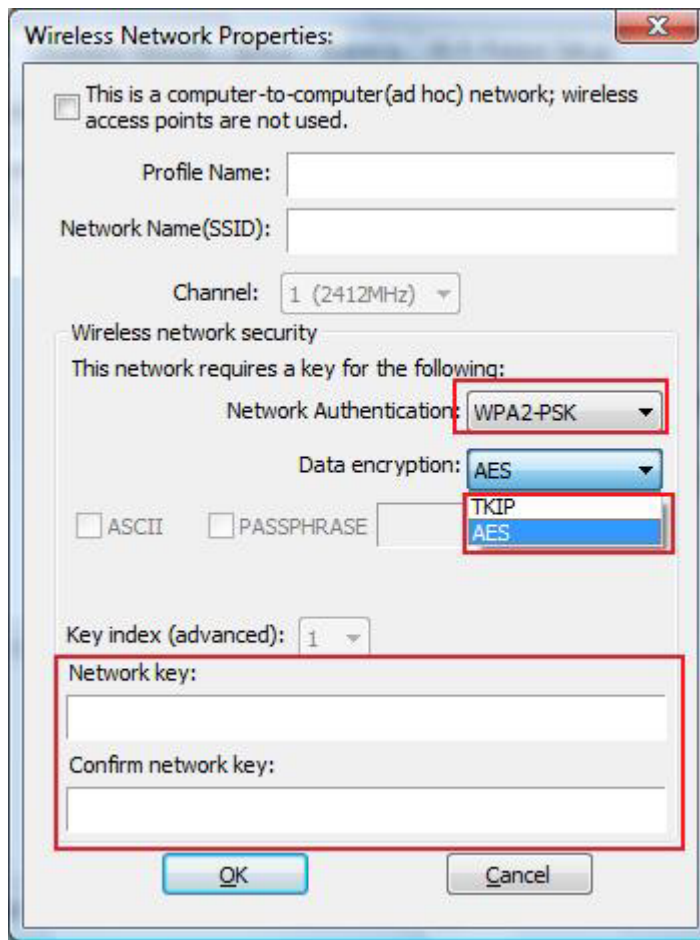
Under **Network Authentication**, you will want to select **Shared key** or **Open System**, depending on the router settings.

Select the encryption setting according to the setting of the router.

- **ASCII** or **PASSPHRASE** will also be predetermined by the router. Refer to your routers settings to find out what you should select here.
- or
- **Key Index** is the key on the router that is currently in use. Input the Network key that matches the Network key of the router.

Click **OK** to save your settings.

#### 4.7.2 Configuring WPA/WPA2-PSK Encryption (for home users)



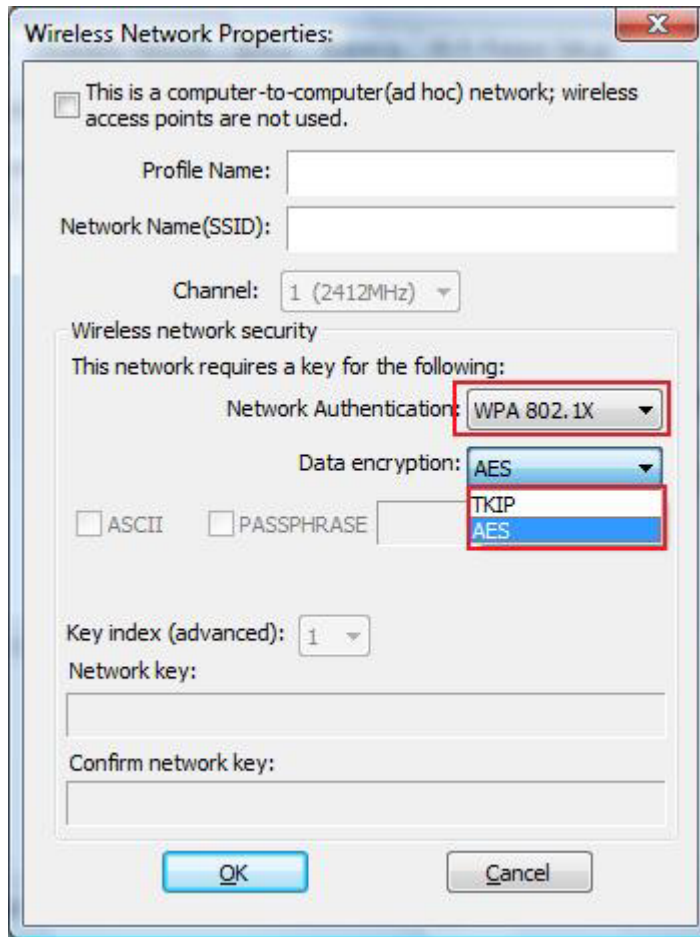
Select **WPA-PSK/WPA2-PSK** from the **Network Authentication** box.

Under **Data encryption** select either **AES** or **TKIP** depending on the settings for your router.

Enter the encryption key that the router is using into the **Network Key** box.

Click **OK** to save your settings.

### 4.7.3 Configuring WPA/WPA2 Encryption (for corporate networks)



Select **WPA 802.1x / WPA2 802.1x** from the **Network Authentication** box.

Under **Data encryption** select either **TKIP** or **AES** depending on the settings for the router.

## 4.8 Ad-hoc and Peer-to-Peer Wireless Networks

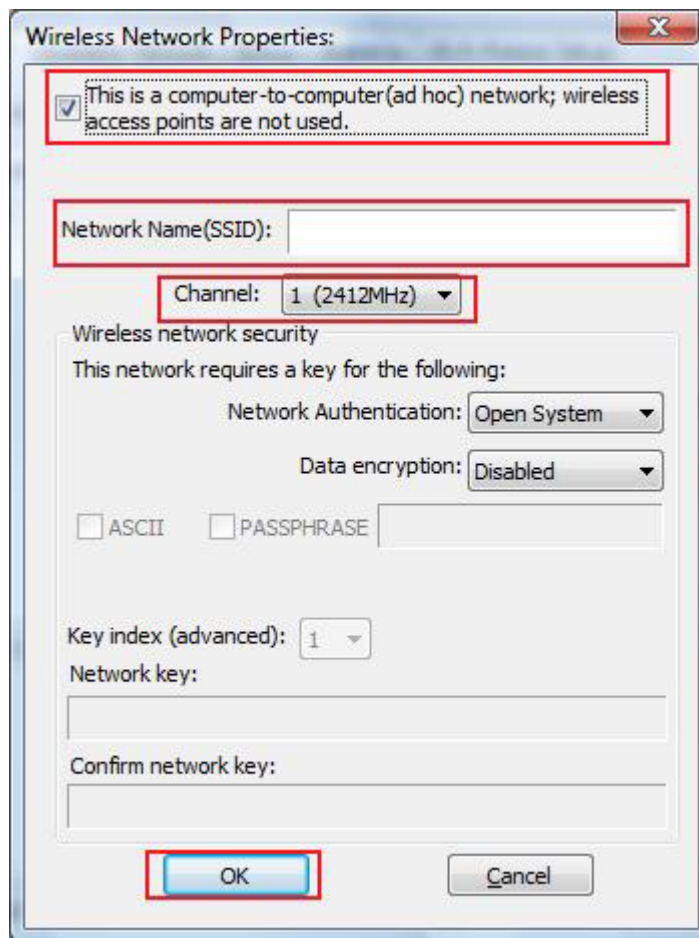
Ad-hoc networking is used when you want to connect two or more computers together but you don't have a router.

In ad-hoc mode, you lose many features that come with a router. The maximum connection speed drops to 11Mbps. In addition, WEP encryption is the only security available in ad-hoc mode.

To set up ad-hoc mode, you will need to create a new profile.

Open the **Wireless Monitor**.

Click on **Profile** and click on **Add**. The profile settings box will appear.



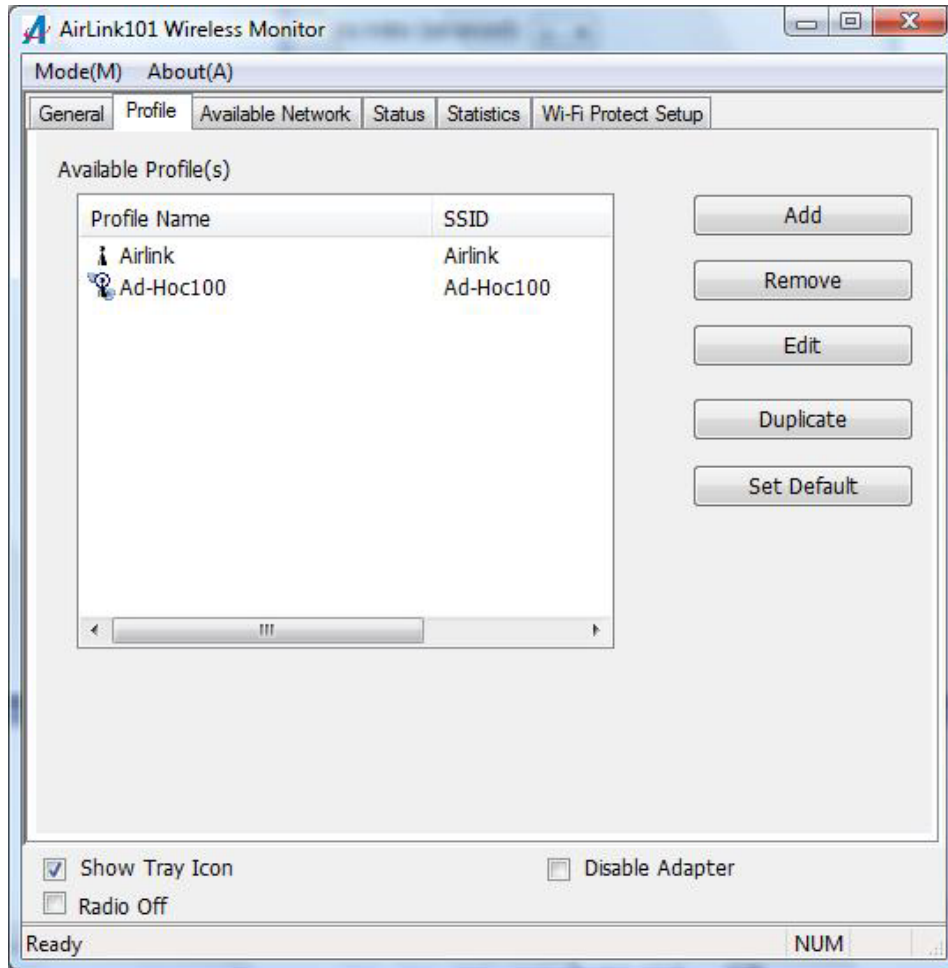
First change the network type to **Adhoc**, by checking the computer-to-computer (ad-hoc) network.

Enter a network name (SSID) into the **SSID** box. Select your desired Channel.



You can also choose between no security or WEP security. If you choose WEP security, you can follow the instructions in the **Configuring Encryption** section of the manual.

Click **OK** to save the profile.



Select your new profile from the Available Profile(s) box, and double click to enable it.

You need to configure all other computers that you are planning on connecting to your ad-hoc network with the same settings that you input on this screen. Every computer has to be set up exactly the same. If any of the settings are different, the network will not function.

**Troubleshooting:** If you are having trouble connecting, slow connection, or connection is unstable, you will want to try changing channels. Start with channel 1 and work your way up until you find a channel that gives you the best connection. Each time you change the channel, save the settings then reboot the computer. Also,

make sure that you do this on every ad-hoc machine so that they will all be set to the same channel.

### 4.9 About



The **About** window provides the information about the Wireless Monitor Utility version and the current driver version.

## Appendix A - Specification

### Frequency Band

- 2.4Ghz

### Standards

- IEEE 802.11b / g / n

### Interface

- USB 2.0 / 1.1

### Data Rate\*

- Receiving: 300Mbps
- Transmitting: 150Mbps

### Antenna Type

- Built-in 2 print antennas

### Security

- WPA2/WPA-PSK (TKIP & AES)
- WEP 64/128-bit
- 802.1x

### LED

- Link/Power

### System Requirements

- Windows 7, Vista, XP and 2000
- MAC 10.4 and above
- Available USB slot

### Weight

- 1g

### Dimensions

- 35.5 x 16 x 8mm (L x W x H)

### Temperature

- Operating: 0°C to 55°C
- Storage: -20°C to 60°C

### Humidity

- Operating: 10% to 90% Non-Condensing
- Storage: Max. 95% Non-Condensing

### Warranty

- Limited 1-year warranty

### Safety Approvals

- FCC, CE, IC

## Technical Support

E-mail: [support@airlink101.com](mailto:support@airlink101.com)

Toll Free: 1-888-746-3238

Web Site: [www.airlink101.com](http://www.airlink101.com)

\*Theoretical maximum wireless signal rate derived from IEEE standard 802.11 specifications. Actual data throughput will vary. Network conditions and environmental factors, including volume of network traffic, building materials and construction, mix of wireless products used, radio frequency interference (e.g., cordless telephones and microwaves) as well as network overhead lower actual data throughput rate. This product is based on IEEE draft 802.11n specification and is not guaranteed to be compatible with future versions of IEEE 802.11n specification. Compatibility with draft 802.11n devices from other manufactures is not guaranteed. Specifications are subject to change without notice. Photo of product may not reflect actual content. All products and trademarks are the property of their respective owners. Copyright ©2010 Airlink101®